



Symbios® BoneShield®

Protected healing.
Superior support.

Symbios® BoneShield® titanium membranes are part of the regenerative solutions from Dentsply Sirona Implants. They offer high mechanical stability and excellent biocompatibility, while allowing diffusion of nutrients through unique micropores.

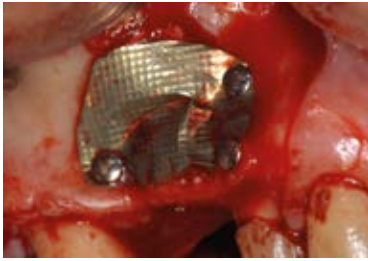


Providing three-dimensional stability

The enhanced rigidity and superior long-term structural support makes BoneShield® particularly suitable for procedures such as ridge preservation, sinus elevation, lateral augmentation or where there are large bone defects^{1,2,4}.

Lateral sinus lift using BoneShield®

Courtesy of Dr. Alessandro Ponte, Switzerland



Coverage of the lateral window with BoneShield® titanium membrane.



Bone regeneration under the membrane shows no clinical signs of inflammatory reactions.

Smooth titanium^{1,3}

The smooth surface reduces the adhesion of plaque and bacteria.

Ultrathin pliability

The 20µm profile allows you to easily contour and mold the titanium membrane without losing mechanical stability.

Unique micropores¹

The membrane allows diffusion of oxygen and interstitial nutrients and fluid.

Ordering information



Contact customer service line to book an appointment with your representative



Learn more about Symbios regenerative solutions at implants.dentsplysirona.com/en

Order No.	Size
3259 7400	Oval, 20/15 mm
3259 7401	Triangular, 21/17 mm
3259 7402	Rectangle, 33/25 mm

Dentsply Sirona Implants offers comprehensive solutions creating value for dental professionals and allows for predictable and lasting implant treatment outcomes, resulting in enhanced quality of life for patients.

References:

- Schopper, C., et al., Long-term results after guided bone regeneration with resorbable and microporous titanium membranes. J Oral Maxillofac Surg Clin NA, 2001. 30(3): p. 157-161.
- Pinho, M.N., et al., Titanium membranes in prevention of alveolar collapse after tooth extraction. Implant Dent, 2006.
- Arpak, M.N., A. Alkan, and I. Nergiz, A case of localized ridge augmentation from using a titanium membrane: A pilot study. Journal of Oral Science, 2000. 42(3): p. 133-138.
- Poeschl et al. Application of platelet-rich plasma for enhanced bone regeneration in grafted sinus. J Oral Maxillofac Surg 2012: