



Update-Description

inLab CAM SW 19.0

This document describes changes and improvements compared to previous version 18.1

June 2019

General

Installationsvoraussetzungen

Recommended: inLab PC V5.0.1.

At least: inLab PC V3.0.1

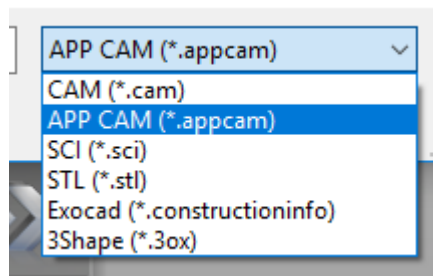
Part	Recommended requirements
Operating system	Windows 10 (64-Bit)
RAM	16 GB or higher
Video card	AMD Pulse Radeon RX 570 or better
Hard disk	2 TB
Processor	Intel Core i7
Monitor resolution	1920x1080
3D mouse	3Dconnexion SpaceMouse Compact

Dentsply Sirona Branding

The new Dentsply Sirona branding has been integrated into the splash screen as well as the watermark of the inLab Software 19.

Data Format

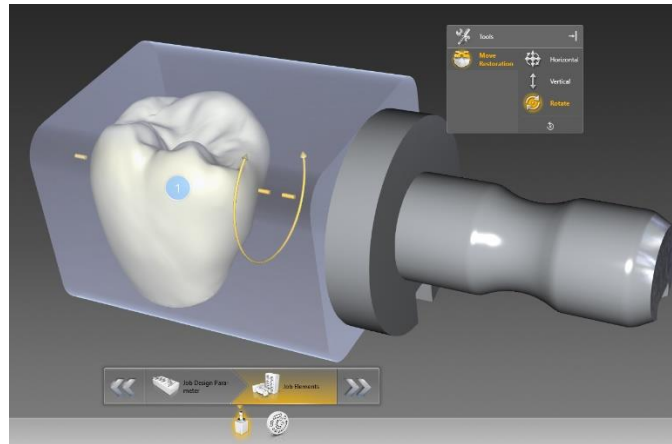
In addition to the existing import options, the data format *.appcam can be imported.



Positioning

Object Movement

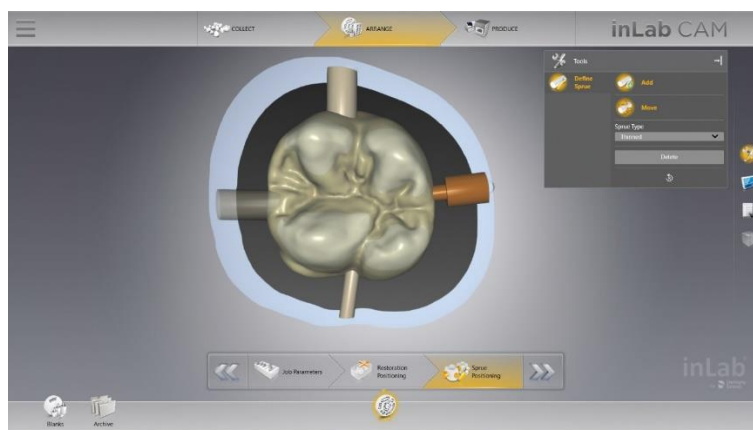
The positioning of objects or blanks, takes place by the help of the mouse buttons. Rotations are executed with „left-click + movement“, displacements with „right-click + movement“. In addition, the keyboard short keys „Shift“, „CTRL“ and „ALT“ visualize the main axes of a restoration and restrict the rotation/displacement to the specific axis.



Individual Pinning

There are four different nesting pins available:

- Standard
- Thinned
- Wide thinned
- remove



Processes

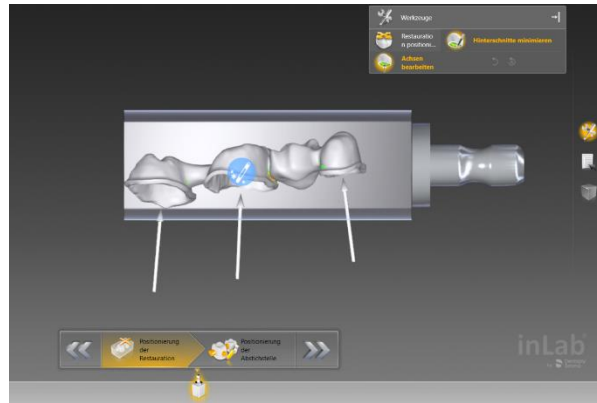
Grinding of Screw- Access Holes

Crowns and Bridges with screw access holes $\geq 2,5\text{mm}$ diameter can be produced from grinding materials with inLab MC X5.



Undercut Reduction

For restorations, positioned in a block material in the multiblock-holder (inLab MC X5) the automatic undercut reduction is available.



Denture Milling

For denture milling (currently based on AvaDent or exocad data), “free space milling” is available to ensure an ideal access to the premilled tooth pockets for bonding teeth after the first milling step.



Adapt to Instrument

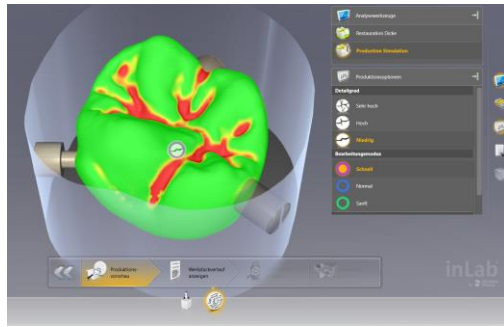
For restorations, whose fitting surfaces are not designed considering the available tools intended for a specific material, the calculation can be executed in inLab CAM to ensure a perfect fit.



Analyzing Tools

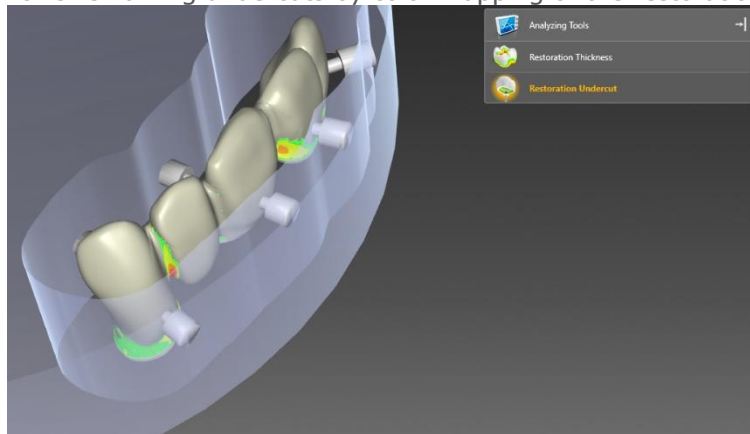
Production Simulation

In the side panel window „Analyzing Tools“, the option „Production Simulation“ is available. The visualization shows the achievable production result based on positioning, pinning and current tool setting.



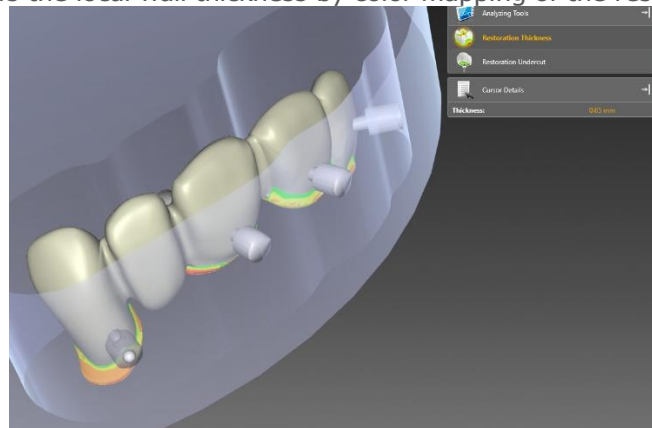
Undercut Visualisation

In the side panes window „Analyzing Tools“ the option „Restoration Undercut“ is available. The Visualization shows remaining undercuts by color mapping of the restoration surface.



Wall thickness

In the side panes window „Analyzing Tools“ the option „Restoration Thickness“ is available. The Visualization shows the local wall thickness by color mapping of the restoration surface.



Performance

- Increased response time in case of manual process interruptions
- Increased speed of machine movements (inLab MC X5)
- Improved undercut reduction
- Improved process in case of manual process interruptions „Continue“, „Tool Change“, „Stop“.

Device Support

inLab CAM 19 supports the following devices:

- inLab MC XL
- inLab MC X5
- Cerec MC XL
- Cerec MC X
- Cerec SpeedFire



Materials

inLab CAM processes discs with 35mm height in connection with inLab MC X5 for all material classes.

The following materials are added to the list of materials:

Dentsply Sirona		
Cercon xt-ML		
Cercon base		
3M	VITA	Ivoclar Vivadent
Chairside Zirconia	YZ XT Multicolor	IPS e.max ZirCAD Prime

Qualitätsverbesserung und Stabilität

Dentsply Sirona verbessert die Qualität ihrer Produkte kontinuierlich. Im Rahmen dieser Version wurden Verbesserungen durchgeführt und bekannte Softwarefehler behoben. Wir empfehlen, immer die aktuellste Softwareversion zu verwenden.