



Xive®  
Smartness  
in practice



 Dentsply  
Sirona  
Implants



# Peace of mind – in the practice and beyond

Xive provides flexibility, smartness and user-friendliness to dental professionals favoring the advantages of a hexagon interface connection. The system was originally developed in a unique and pioneering collaboration between clinicians and industry. Experience met innovation with one common purpose – to develop an implant system that is as intuitive as it is efficient, delivering reliability and peace of mind to dental professionals and their patients worldwide.



# Simplify your workflow

Specifically designed to provide full restorative options for every patient and maximize clinical efficiency. We believe this is a smarter way to work, developing intuitive implant solutions that work seamlessly together to improve everyday life for both you and your patients. And we are not alone: 9 out of 10 Xive users would recommend the system to their network of dental professionals.



Continuous surveys among Xive users worldwide back our visionary objectives with facts and figures. They clearly prove that we are on the right track.

# 90%

of Xive users state that the most important factor when choosing the system is **simplicity and ease of use.**



“The Xive System is a fast, reliable and always predictable implant system that you can use in your daily routine work. It’s an implant system I can count on to simplify my everyday work.”



Dr. Marco Degidi, Italy

Survey data based on results from an internal survey with 300 Xive users, across Europe and North America. Data on file.

# What makes Xive<sup>®</sup> unique?

It's a good thing, when the whole is greater than the sum of its parts. Nevertheless, it's important to know the elements too. Xive can trace its versatility and flexibility attributes to these four components:

## Easy and versatile prosthetics

A range of prefabricated and patient-specific abutments provides versatility in prosthetics, at both implant and abutment level, including immediate restorations for almost any possible indication. Deep internal hexagon connection with self-guiding properties and color-coded or laser-marked components supports error-free workflow.

## Bone care with platform-switch

Integrated platform-switch option supports improved preservation of crestal bone levels with concurrent favorable soft tissue conditions.

## Friadent<sup>®</sup> plus surface

The grit-blasted and high temperature-etched Friadent plus microstructure excels through rapid bone formation on the implant surface. This results in early osseointegration and high bone-to-implant contact.



## ActiveBone Control™

High primary stability in all types of bone can be achieved with the patented combination of bone-specific preparation protocol and bone-condensing thread design.

# Treat more patients

Xive's unique fit-for-purpose solutions offer excellent predictability and shorter treatment times. The flexibility of the system also makes it ideal for tackling even complex indications, as well as giving immediate treatment. In short it gives the option of bringing back quality of life to more patients, with both confidence and convenience.

## 80%

of Xive users say that what most improves efficiency for both clinician and patient is **reduced treatment time.**

“

“The Xive system is one of the most versatile systems on the market, both surgically and prosthetically, allowing me to treat more patients than some other systems do.”

”

Dr. Thomas McGarry, USA

Survey data based on results from an internal survey with 300 Xive users, across Europe and North America. Data on file.







Xive<sup>®</sup>



### SURGICAL CAPABILITY

- Placing Xive is straightforward and intuitive thanks to a single-start step-by-step surgical protocol.
- Immediately loaded restorations are possible with high primary implant stability, delivered through the patented ActiveBone Control™ capability of Xive.
- Short and narrow diameter implants allow you to handle challenging indications without extensive bone augmentation.
- Co-existing sub- and transgingival implant designs with identical preparation protocol.

### PROSTHETIC FLEXIBILITY

- The prosthetic portfolio for Xive consists of multiple restorative options, both temporary and permanent.
- Cost-effective and time-saving immediate loading treatment solutions.
- Interchangeable prosthetic abutments to create your preferred width of platform-switch.
- End-to-end color-coding ensures ease of use and safeguards against potential errors.

# Solutions you can trust



---

## The smarter choice for restoring smiles

### **SmartFix concept**

The SmartFix concept is an efficient and time-saving, immediate loading treatment on four implants for screw-retained restorations. It provides a stable prosthetic fit and avoids critical anatomical areas by using implants placed at an angle. As a result, patients are often spared time-consuming, costly, and uncomfortable bone grafting procedures.

Xive is as individual as each patient situation. The flexibility of the prosthetic line has been setting the pace in dental practices and their laboratories for more than two decades.

Whether a crown, fixed partial denture or removable prosthesis – prefabricated and patient-specific components for standard and premium solutions give you the greatest possible restorative freedom, so you can restore confidence and continue to create long-lasting smiles.



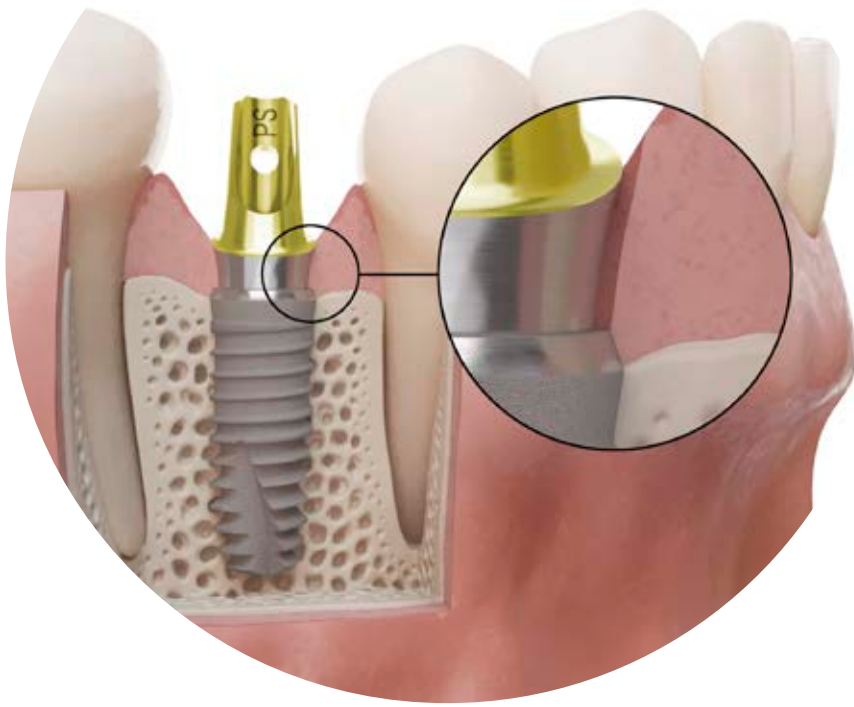
---

## Compatibility for increased comfort

### **Patient-specific suprastructures on Xive implants**

By pairing a Xive TG, one-piece implant with an implant suprastructure, it is possible to utilize all the benefits of a patient-specific restoration and gain cost-effectiveness. The transgingival implant design eliminates the need for additional abutments, and the one-stage surgical procedure is time-saving and comfortable for the patient.





“Xive is a flexible and easy to handle system that provides excellent primary stability for all kinds of prosthetic restorations with its all-embracing approach to prosthetic solutions.”

Dr. Anne Benhamou, France

## Gaining soft tissue through platform-switching

### Platform-switch concept

Xive S implants feature an integrated and interchangeable platform-switch option that helps you maintain crestal bone levels while simultaneously leaving space for soft tissue growth.



## Freedom of choice

### Easy and versatile prosthetics

A range of prefabricated and patient-specific abutments provides you with extreme prosthetic versatility at implant and abutment level, and with immediate restorations, for all indications.

Temporary restoration

Implant placement and index registration



## Built-in smartness

### TempBase concept

With the unique TempBase concept included with every Xive S implant, you can easily create temporary and immediate restorations. It serves as a temporary abutment upon which you place a provisional, but functional, restoration with the help of the TempBase cap. The TempBase concept facilitates the procedure for immediate temporary restorations.

# The key to confidence...



Xive S

Xive S incl.  
pre-assembled TempBase

...looks more  
like a screw.



Xive TG



# Experience and progress

From day one Xive was designed to focus on smartness and convenience. Primary stability was one of the main objectives back then. Let's just say we succeeded. We are also very proud of what we have achieved since, with constant evolution of new features and attributes.

## 1990

Development of the color-coded Friadent prosthetic range, successfully in use on Frialit since 1992 and on Xive since 2001.



## 1999

Frialoc implants for easy and economical immediate loading concepts.

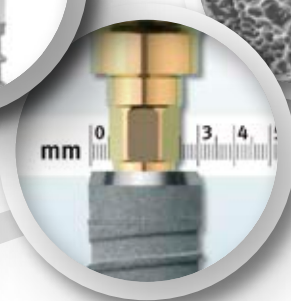
## 2001

Launch of the Xive implant system with subgingival Xive S implants, including the TempBase concept for immediate temporization.



## 2002

Launch of the transgingival Xive TG implant.

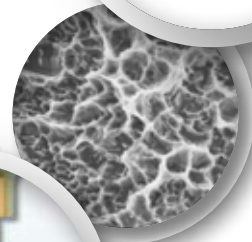


## 2003

Introduction of the Xive S 3.0 mm implant.

## 2005

Introduction of Cercon zirconia abutments for superior esthetic results.



## 2003

All Xive implants are provided with the innovative Friadent plus implant surface.

## 2012

Launch of the SmartFix concept – the prosthetic solution for full arch restorations on implants placed at an angle.



## 2013

More platform-switch options on Xive with introduction of new components.



## 2018

Launch of the Xive Gingiva Formers C, Xive Transfer Copings C and Xive Transfer Copings PickUp C. Improved design following curved emergence profile requirements and preservation of soft tissue.



## 2019

The Acuris concept – fixed prosthetics (single crown) for the patient and removable for the dentist. Thanks to highly accurate conometric retention there is no need for cement or prosthetic screws. Introduced for Ankylos, Xive and Astra Tech Implant System EV.



## 2010

Atlantis patient-specific CAD/CAM abutments.



## 2011

TitaniumBase two-piece CAD/CAM abutments.



## 2014

The worldwide unique WeldOne concept is launched, facilitating stable and durable chair-side solutions.



## 2018

Azento is a convenient start-to-finish custom implant solution, enabling dentists to provide consistently excellent results.



# Build your business



## We are here to help

Dentsply Sirona Implants offers comprehensive and practical programs for marketing and managing your dental practice or dental laboratory.

Our dental marketing and sales professionals can support you with targeted consultations, marketing services, and continuous education for your practice or laboratory. These development programs are designed exclusively for our Dentsply Sirona Implants customers.

We know from current surveys that clinicians around the world look for, and appreciate, convenience and ease-of-use. Combine these factors with great predictability and esthetics and you have a winning concept, resulting in happy patients. This in turn means great momentum when building your practice, from both a clinical and a business perspective.

# 86%

of Xive users appreciate the system's flexibility as it **allows restorative freedom.**

“

“Besides the outstanding handling in surgery – even in edge cases – we note that dental labs like to work with the Xive system because of the system logics, the easy to handle hexagon connection interface and the fact that it delivers treatment options for any indication without being complicated.”

”

Dental surgeon team,  
Oralchirurgie Markkleeberg, Germany

Survey data based on results from an internal survey with 300 Xive users, across Europe and North America. Data on file.



# 15 years of clinical documentation

98%  
long-term survival

A systematic review of the Xive implant system looked at 55 clinical studies following more than 5000 implants for up to 15 years. It concludes that the long-term cumulative survival rate of Xive implants reaches 98% and most short studies show survival rates of 100%.

The full published literature of more than 250 articles paints a picture of a well-documented, reliable and safe implant system. For a complete and continuously updated list of references supporting the clinical success of the Xive implant system, visit: [dentsplysirona.com/implants/science](https://dentsplysirona.com/implants/science)

5000  
IMPLANTS

55  
CLINICAL STUDIES

15  
YEARS



## Global Warranty

As a part of Dentsply Sirona Implants, Xive is naturally backed by a comprehensive worldwide support network and warranty, helping you focus on your practice and the comfort of your patients during all phases of their treatment.

The Xive implant system and clinical components, excluding those manufactured from zirconia, are covered by a lifetime warranty, including defects in materials and workmanship. Likewise, we will replace an implant, at no additional charge, in cases of no osseointegration or failed osseointegration.

For complete warranty information please contact your local Dentsply Sirona Implants sales representative or customer service center.

## About Dentsply Sirona Implants

Dentsply Sirona Implants offers comprehensive solutions for all phases of implant therapy, including Ankylos®, Astra Tech Implant System® and Xive® implant lines, digital technologies, such as Atlantis® patient-specific solutions and Simplant® guided surgery, Symbios® regenerative solutions, and professional and business development programs, such as STEPPS™. Dentsply Sirona Implants creates value for dental professionals and allows for predictable and lasting implant treatment outcomes, resulting in enhanced quality of life for patients.

## About Dentsply Sirona

Dentsply Sirona is the world's largest manufacturer of professional dental products and technologies, with a 130-year history of innovation and service to the dental industry and patients worldwide. Dentsply Sirona develops, manufactures, and markets a comprehensive solutions offering including dental and oral health products as well as other consumable medical devices under a strong portfolio of world class brands. As The Dental Solutions Company™, Dentsply Sirona's products provide innovative, high-quality and effective solutions to advance patient care and deliver better, safer and faster dentistry. Dentsply Sirona's global headquarters is located in York, Pennsylvania, and the international headquarters is based in Salzburg, Austria. The company's shares are listed in the United States on NASDAQ under the symbol XRAY.

Visit [www.dentsplysirona.com](http://www.dentsplysirona.com) for more information about Dentsply Sirona and its products.