



Powered by
DS CORE

Digital Impression with Dentsply Sirona

Enabling your practice to expand
into digital dentistry

dentsplysirona.com/digital-impression

THE DENTAL
SOLUTIONS
COMPANY™

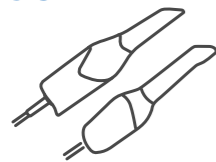
 **Dentsply
Sirona**

The digital workflow starts with a scan

Have you been waiting for the right time to go digital? The wait is over! Here is your chance to get started. Digital impressions are now easier, faster, and more precise than ever before. They facilitate optimum treatment outcomes and offer a wide variety of clinical workflows and indications.

You can keep your existing workflows, but you will quickly find improvements everywhere: You won't have to repeat impressions, restorations will fit better, and treatment times will be noticeably shorter. Start scanning with Primescan and you will be surprised how much you enjoy the digital workflow, and how much your efficiency and collaboration with your partners improves. Your patients will thank you for a great treatment experience. Your team will love it.

SCAN ○ CONNECT ○ TREAT



Powered by
DS CORE



Seamless
Connection



Validated
Workflows



Open STL
File Export

Restorative
Implantology
Orthodontics
Sleep Appliance

OPEN SCANNERS! Validated connection to all major lab software.

* DS Core is not a medical device software. It is not intended to diagnose, treat, cure, or prevent any disease or health condition. Use only for information, education or sharing purposes. Service is subject to country availability. Please contact your local DS representative.

DS CORE

Giving you the power to do more

Dentsply Sirona introduces DS Core™ a new digital platform to empower the dental practice growth through efficiency and connectivity.

The DS Core platform is the gateway to the different DS Core Services and provides a cloud storage and patient files sharing solution that supports GDRPR/HIIPA regulatory compliant collaboration with labs, specialists and partners.

It offers the chance to share different types of case files from one integrated library, and as it is connected to your Dentsply Sirona equipment, all intraoral scans and X-rays are automatically uploaded and organized according to your patient list, allowing you to access your patient records remotely from any location.

The right scanner for all your digital needs

Dentsply Sirona's intraoral scanners provide you with flexible workflow options to elevate your patients' experience and prepare your practice for long-term growth. Primescan and Omnicam offer the perfect starting point into digital dentistry. While easy to use, they also provide you with the flexibility to design your individual workflows and enable you to expand your treatment options in the fields of Restorative, Implantology, Orthodontics and Sleep Appliances.

NEW!

High accuracy always allows more! Digital impression with Primescan now validated for full-arch fixed implant restorations with Atlantis® suprastructures.*

Easy to use

Impression taking with Primescan and Omnicam is easy and intuitive, especially with Omnicam's guided scanning option for full arch scan. This procedure can be delegated, saving time and bringing more joy to your assistants. The mobile acquisition center comes with a long battery charge.

Time saving

Easy and fast scans with shorter treatment time and immediate control of scan results lead to increased efficiency in the practice. Omnicam is great for quadrant scans and Primescan outstanding for full arch scans.



Excellent scan results

Between Omnicam's reliable quality and outstanding accuracy with Primescan, both scanners ensure a perfect fit for any restoration or appliance. Digital models are also less prone to errors than analog casts and reduce the need for repeated impression taking. Your laboratory will appreciate it.

Outstanding hygiene

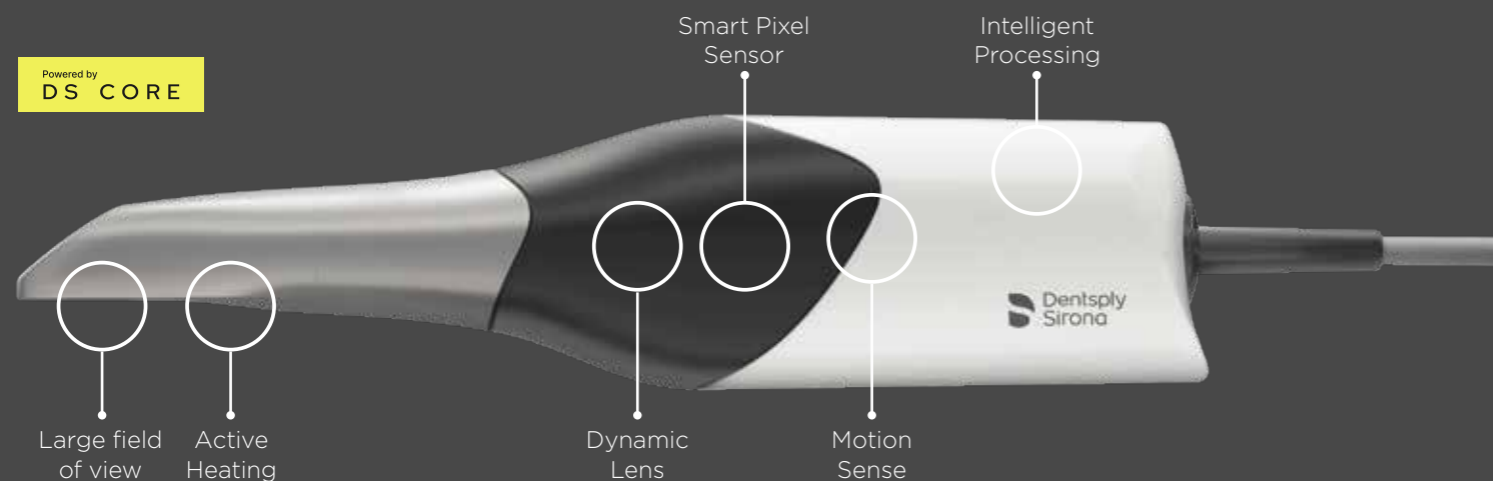
Primescan and Omnicam both have fully closed scanning windows to prevent liquid infiltration during the scanning process. The mobile acquisition center is approved as a medical device to be used in the vicinity of patients, unlike consumer notebooks. Closed surfaces allow for easy and fast disinfection. Additionally, no physical models means no cross contamination risks.

* This specific workflow is validated for partial and fully edentulous jaws based on reference Atlantis IO FLO-S scanbodies.

Primescan

The straightforward entry into digital dentistry

Powered by
DS CORE



Engineered for superior performance

- Future-proof patented technology
- Full arch scan in less than a minute
- Easy scanning of deep cavities, steep inclines and reflective surfaces like metal crowns
- Simple scanning of large edentulous areas and palates
- Unique three sleeve concept

Hygiene protection sleeves for Primescan

With three different sleeve varieties, you can easily integrate the intraoral scanner into your hygiene workflow. The sleeves can be disinfected and autoclaved or disposed after use. Choose the sleeve which fits best for you and the requirements of your market.



Autoclavable steel sleeve with single-use window



Disposable sleeve



Steel sleeve with sapphire glass window

Atlantis®



First intraoral scanner validated for Atlantis suprastructures¹

Benefit from a new workflow for a clinically-efficient and digitally-supported implant treatment that includes all components for partial or edentulous jaws. Based on accurate scan data using Primescan and Atlantis IO FLO-S scanbodies, your lab partner gets the possibility of ordering prosthetic components including a complete patient-specific suprastructure from Atlantis. For predictable results by accurate fit.

Primescan™



Double the scan speed with less interruptions

Benefit from a new scanning experience with Primescan that is now two times faster than before with less interruptions². Continuous software improvements available free of charge for current users as well as new customers ensure you and your team more control and predictability in all workflows.

Speed. Usability. Accuracy.

Start scanning right away

Primescan offers continuous self-heating for fog-free scanning – which means you are always ready to go.

Faster and smoother scanning

The innovative Smart Pixel Sensor processes more than 50.000 images per second, producing photorealistic and highly accurate data. Thanks to this ability to scan at an incredible data density, Primescan delivers complete 3D structures of everything in its field of view – from the very first scan. The excellent scan results are instantly displayed on the touchscreen of the Acquisition Center.

Faster calculation and less interruptions

Intelligent processing ensures the optimal collaboration with the software by transmitting exactly the data needed to proceed. The results: faster calculation and fewer scan interruptions.

Easy accessibility of difficult situations

Steep angles? Hard-to-access areas? Reflective materials? An easy job for Primescan. The scanner supports scanning of shallow angles (>5°) allowing it to capture everything within its field of view without tilting.

You get what you need

Primescan's large field of view captures everything that is within its view. Its dynamic depth scan technology enables perfect sharpness and outstanding precision, even at a measuring depth up to 20 mm – a crucial advantage for sub-gingival indications. The automatic artifact removal cuts out extraneous data such as a cheek, tongue or finger in real time as you are scanning.

Smooth scanning of reflective materials

Primescan captures scanning data from tooth enamel and restorations so well that powdering the reflecting surfaces does not have a significant effect on scan performance.

Measurement of different surfaces

Thanks to Primescan's highly accurate data, fast and easy scanning of all dental surfaces, including metal crowns is possible.

Low-noise 3D data

Thanks to the high frequency contrast measurement in each pixel, the images are extremely sharp. This exceptional sharpness ultimately leads to a precise fit for fabricated restorations.

Increased optical resolution

The shorter the wavelength, the finer the measurements. Due to its very short wavelength, blue light enables Primescan to measure even the tiniest details.

Primescan's precision and accuracy have been proven in several studies. For more detail, please refer to our website dentsplysirona.com/primescan.

¹ Full-arch fixed implant restorations based on Atlantis IO-FLO S scanbodies.

² From Connect SW 5.2. Internal data on file.

Omniscam AC – Proven reliability

Omniscam AC delivers proven reliability that fosters practice growth and allows for better patient care. If you are looking to grow your practice by adding clear aligners and simple implant cases, Omniscam is the right scanner for you. You can easily share the scan data with your lab or external partners like Invisalign.

- Multi-use functionality for all relevant clinical applications, with over 7 million impressions* per year
- Small scanner head for easiest access
- Great accuracy and performance
- Cart allows for uncompromised ergonomics and facilitates patient communication



Omniscam AF – Flexibility choice

While compromising all individual components of Omniscam AC, Omniscam AF offers a flexible and cost-effective solution to digitalize everyday dentistry. It is a viable alternative for single chair practices without the need of cart or practices with multiple locations or treatment rooms on different floors with the need to share one intraoral scanner.

- Comprises all individual components of Omniscam AC
- Includes a flexible tabletop camera tray, a monitor and a PC**
- Easy transportation
- Flexibility to scan in different rooms



dentsplysirona.com/omnicam

* Source: Internal data.

** Monitor not included in scope of delivery.

Acquisition Center

Medical device approved
for use in patient vicinity



Touch screen with anti-reflective surface

enables natural and intuitive SW operation.

Kinematics for flexibility

The large screen can be moved in all directions for perfect ergonomics, as well as comfortable patient communication.

Power cable holder (on the back)

Active window heater

Extensive battery life

The battery buffer allows for full mobility between treatment rooms and enables over 60 minutes of scanning without external power source.

Smooth surface, very few gaps

make it easy to clean and disinfect.

Approved medical device

Primescan AC and Omniscam AC may be placed right next to the patient.

Order at your lab with Connect Case Center

Whether you start your workflow with Primescan or Omnicam, Connect Case Center – Dentsply Sirona’s Digital Impression portal for fast and easy ordering collaboration – gives you the option to transmit your data securely and anonymized. With one click, your laboratory or partner receives case information immediately.



**CLOSER
COLLABORATION**

99 %

LAB ACCEPTANCE
rate of Dentsply Sirona
scan data*

Enhanced communication and no additional costs

- Convenient and safe data transfer and ordering within seconds (HIPAA and GDPR compliance).
- The partner dental laboratory receives case data including images and screenshots immediately.
- Review and discussion of the case digitally during the patient consultation allowing for an immediate correction of the impression or the preparation without an additional appointment.
- No license fees



“By using the digital impressions, there is no loss of time for us as a laboratory. With Primescan and Omnicam, distorted impressions are a thing of the past. Both scanners are of exceptional quality. But the accuracy of Primescan is really impressive. This makes it easy to create accurate dental restorations working directly with the original data without creating a physical working model.”

Ulrich Thielen | Master dental technician | Germany

dentsplysirona.com/connectcasecenter

* Internal evaluation, data on file at Dentsply Sirona

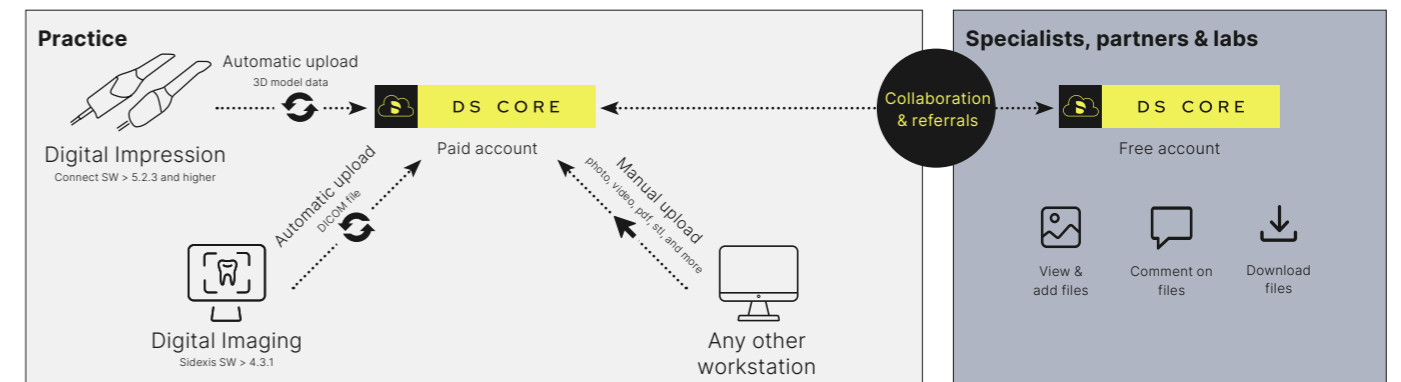
Experience more collaboration with DS Core



DS Core* offers a gateway to powerful collaboration, better connectivity and higher efficiency through a cloud storage and sharing solution that supports regulatory compliant collaboration, and through our Digital Services, beginning with flexible partnership with labs to get high quality CAD designs, equipment

service, support and education. Easily connect your Dentsply Sirona’s intraoral scanner to DS Core, then share the scan with colleagues and partners by indicating a recipient e-mail address. You can keep control over who has access and for how long. DS Core offers inexpensive alternatives for different volumes of data and practice size that can be upgraded anytime.

Benefits of DS Core for Digital Impression



Data storage & back-up

Conveniently store different types of patient files in the cloud for additional backup.

Share & collaborate

Efficient collaboration with colleagues, specialists, and partners when using DS Core sharing functionality and its embedded intraoral scans and x-rays viewer.

One central platform

Easily combine digital impressions and x-rays for any workflow in one library.

Accessibility

Convenient file access and download from different devices in the practice or from anywhere else.

Using
DS CORE

Bring efficiency to your everyday work by having patient files organized and in one easy to access cloud platform. Scans taken with the Connect Software will be automatically uploaded into DS Core. By simplifying some of your tasks, DS Core allows you to keep focused your patients.

DS Core giving you the power to do more.

Learn more about DS Core at dentsplysirona.com/ds-core

* DS Core currently supports automatic upload for devices connected to Connect SW 5.2.3.

Connectivity opens a world of possibilities.

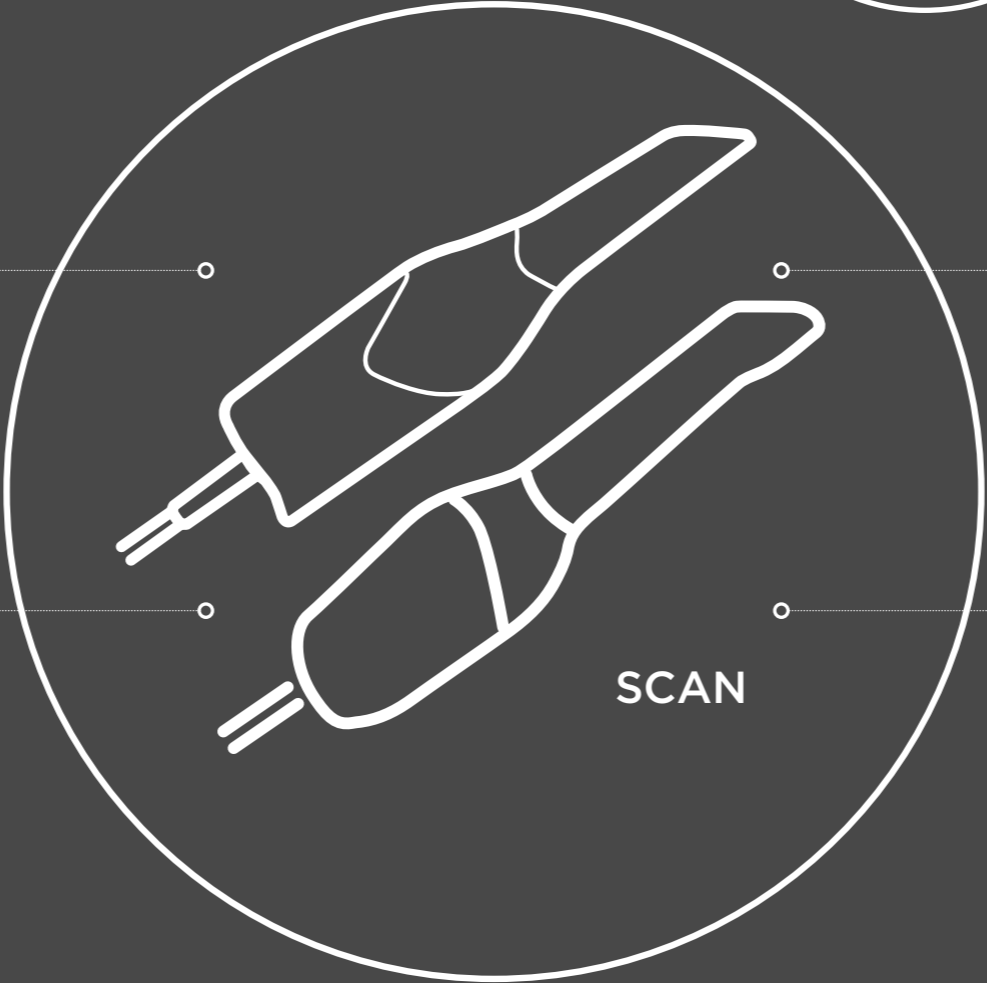
Rely on Dentsply Sirona, while expanding your expertise and offering your patients more

With Primescan powered by DS Core, you can treat more patients by offering more services, including clear aligners, implants, restorations and endodontic solutions. By connecting you with expert labs, streamlining your existing workflows and allowing you to easily integrate new workflows into your practice as you grow, you can take advantage of the latest technological solutions digital dentistry has to offer to provide an unbeatable patient experience.

Digitize your workflows while keeping your established relationships. Your lab technician will appreciate the great scan results and easy data communication for all restorative indications, as well as for all other application areas.



Primescan also opens the door to the digital world of orthodontics. Send data to your specialized partners to order orthodontic appliances, or take advantage of a seamless Dentsply Sirona workflow with SureSmile® aligners for a quick and efficient treatment.



Make the most of your intraoral scanner and visualize volumetric changes in the soft tissue, hard tissue and the position of the teeth over time. OraCheck provides a 3D comparison between two or more digital scans.



Make use of various workflow options with Primescan for both implant surgery as well as implant prosthetics and directly connect to great partners such as Simplant, Atlantis and Azento. Primescan is now validated for Atlantis suprastructures*.



Use Primescan to expand your range of applications in the field of sleep appliances. Send the scan data to Panthera Sleep or your preferred partner to order high quality customized sleep devices and splints.

A great option. You can expand Primescan into a CEREC System at any time and offer your patients high-quality dental restorations in a single visit.



* Full-arch fixed implant restorations based on Atlantis IO-FLO S scanbodies.

From the practice to the lab

Our intraoral scanners allow you to keep working with your lab and your preferred partners while using the option to communicate with them in real time and simplify closer collaboration. You can also take advantage of our validated as well as seamless workflows. Transmit your data securely - in anonymized format, if desired - to your dental lab or partner via the Connect Case Center.



Open

The Connect software can generate 3D models in STL format.



Validated

Our validated workflows allow for securely sending data in a suitable, high-quality format via the Connect Case Center.

Validated connection to all major lab CAD software!



Seamless

Working with Dentsply Sirona products from start to finish means enjoying seamless workflows, which are not only 100% safe, but also extremely comfortable.



Restorative workflows



1 Scanning

Both Primescan and Omnicam can quickly and accurately generate an impression of the preparation, the antagonist and the bite in the patient's mouth - powder-free and in color. You can interrupt and resume the scan procedure at any time. Digital impression taking has the advantage that you can assess quality right there on the screen.



2 Data transmission

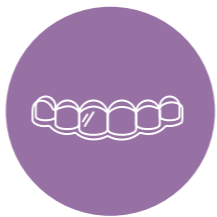
Upload the 3D model to the Connect Case Center and complete the digital order form in a matter of seconds. With a single click in the software, the case is transmitted to the lab of your choice via the Connect Case Center without fail. In addition to secure and anonymized transmission, if desired, you and your lab also have a high level of documentation. Additionally, you can transfer data with the open STL format. All of these processes are much faster than with traditional impressions.



3 Data reception by the lab of your choice

All third parties are able to access data transmitted via Connect Case Center by installing a Connect Case Center Inbox, even labs without inLab software. Thanks to the digital technology, your lab can now exchange images with you and discuss details in real time. You can even respond to questions from your lab while your patient is still in the chair. Your collaboration will become closer than ever before.

Orthodontic treatments



More and more often, patients ask for orthodontic corrections for various reasons. Primescan and Omnicam open up the digital world of orthodontics and enable you to satisfy your patients' desire for a healthy, beautiful smile made by the dentist they trust: you.

The intraoral scan is the starting point of any aligner planning. With Primescan and Omnicam, you can work with specialized partners to order orthodontic appliances - or take advantage of a seamless Dentsply Sirona workflow with SureSmile® aligners for a short and efficient treatment.

The optional CEREC Ortho software is available for special orthodontic tools such as model analysis and treatment simulation.

With SureSmile Aligner, you can expand your treatment range with orthodontic procedures. More than 20 years of experience in digital planning for orthodontic treatments give you the security of excellent initial setups and predictable, compelling results. The SureSmile software is browser-based and can be run on any practice PC without local installation. Precise processing of data and thorough quality control ensure outstanding fit, excellent durability and a virtually invisible treatment.

dentsplysirona.com/orthodontic-primescan



1 Collecting records

Orthodontic treatments require full arch scans which is where Primescan really shines. Capture a highly accurate full arch scan with Primescan or Omnicam as well as intraoral and extraoral photos at the first appointment. Optional for clear aligner treatment: X-ray data for a more comprehensive diagnosis.

2 Check and Analysis

The optional CEREC Ortho Software enables you to perform a model analysis and treatment simulation for higher case acceptance right after the scan.

3 Submit the treatment plan

Submit the prescription and rely on our Digital Lab Specialists or specify your detailed treatment preferences. All treatment plans submitted go through a comprehensive planning process and a final quality inspection by a Digital Lab specialist.

4 Treating your patient

Once you've approved the treatment plan, SureSmile(R) Clear Aligners are custom fabricated using an innovative process.

When the patient kit, SureSmile® VPro™, and SureSmile® Clear Aligners arrive at your practice, it's time to start treatment. When the treatment has ended, a SureSmile® Retainers are essential to ensuring happy patients' new smiles stay straight.

CEREC Ortho Software

- CEREC Ortho Software makes it possible to perform a model analysis right after the scan. The software AI provides you with valuable information on Angle Class, Bolton index, overjet, overbite, transversal distances, available space and symmetry.
- A treatment simulation automatically aligns teeth and displays a possible result only minutes after the scan - a great way to help your patients make a decision before you order a treatment plan.





Digital implant workflows

Different possibilities to shape your digital implant workflow with Primescan and Omnicam

For implantology, digital technologies play a central role and intraoral scanning is a logical step toward a full digital implant workflow. With Primescan and Omnicam you benefit from highly accurate scan data that opens new possibilities to consistently increase security, effectiveness and comfort for you, your team and your patients. Rely on the safe, seamless workflows of guided implantology for greater patient comfort and best results.



1 Digital capturing

See more with a CBCT image, for example, from our Axeos or Orthophos 3D systems that visualizes the patient's anatomical situation. With the intraoral scanners Primescan and Omnicam, you can capture the patient's dentition and surrounding soft tissues.

Primescan is the first intraoral scanner to be validated for Atlantis suprastructures on edentulous jaws for fixed implant restorations.*



2 Restorative and implant planning

Send the CBCT data, intraoral scan and clinical specifications to your lab or partner of choice to obtain an implant treatment plan without the need to purchase a planning software. The combination of bone situation and soft tissue information offers the optimal basis for ideal restorative and implant planning.



3 Guided surgery

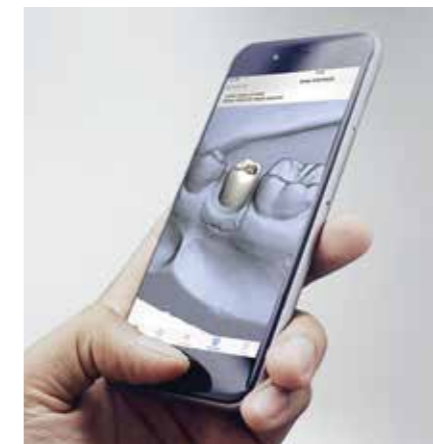
Using a surgical guide ensures precise implant placement and sets the path for safe and accurate treatment. You can order the surgical guide by your lab or partner of choice.

Perform your preferred surgical technique in a safe way with the patient-specific Simplant guides. Choose among a broad choice of guides as support tooth, support bone, support mucosa, reduction guide and immediate smile.



4 Scanning

Right after the implant is placed during surgery, take an accurate digital impression in natural colors. It could not be easier. With the easy-to-handle Primescan and Omnicam, impression taking is more pleasant and time-saving than ever before.



5 Restorative design and manufacturing

Work together with your lab or partner of choice to design and manufacture the abutment and implant restoration. Atlantis patient-specific abutments from Dentsply Sirona can easily be viewed and edited before design and manufactured and finalized by your lab.



6 Final restoration

As soon as you have received the patient-specific solution, you can place the restoration.



"Primescan has been a complete game changer for me specifically from a full arch implant perspective. I've been blown away with how accurate it has been in both our testing and clinically. I feel completely comfortable scanning anything from a single tooth to a full-arch implant case knowing full well that we'll get very predictable results due to the accuracy of the scanner."

Dr. Mark Ludlow | Prosthodontist | USA

dentsplysirona.com/clinictopartner



DS PrimeTaper

The new DS PrimeTaper implant is designed with a progressive taper and thread for primary stability. The perfect union of form and function.

dentsplysirona.com/primetaper

Digital Sleep Appliance treatment

Obstructive Sleep Apnea is a significant, life-threatening, yet under-treated chronic disease. While it is traditionally treated by Continuous Positive Airway Pressure (CPAP) devices, their low compliance rate (**50%** non-compliance after 6 months¹) has paved the way for treatment alternatives such as oral sleep appliances. These small and practical devices can be used for snoring and mild to moderate OSA. They can also be used for severe OSA when patients are non-compliant with CPAP.

Thanks to digital impression, sleep appliance treatments have never been so easy and comfortable. With Primescan and Omnicam you get outstanding and reliable scan data to create custom-made sleep devices for your patients.

¹ Efficacy vs Effectiveness: CPAP and Oral Appliances. Journal of Dental Sleep Medicine. Vol. 2, No. 4, 2015. K Sutherland, PhD; C L. Phillips, PhD;

² J.G. Park, Encyclopedia of Sleep, 2013

³ Obstructive sleep apnea is a common disorder in the population—a review on the epidemiology of sleep apnea. Journal of Thoracic Disease, 2015 Aug; 7(8): 1311-1322. Karl A. Franklin and Eva Lindberg

Up to
45%
of your patients
snore²

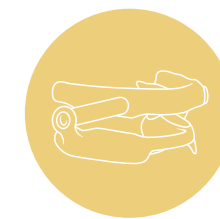
Nearly
20%
suffer from
Obstructive
Sleep Apnea³

Snoring and Obstructive Sleep Apnea associated risks include:

- Excessive daytime sleepiness
- Diminished attention
- Concentration, memory and mood disorders
- Diabetes
- Heart disease
- Signs and symptoms of depression

Pictures of sleep appliance with courtesy of Panthera Dental.

dentsplysirona.com/sleep-appliance-primescan



- **Panthera Dental** offers a comfortable solution for snoring, mild to moderate sleep apnea and severe sleep apnea when CPAPs are refused. Their cutting-edge Digital Sleep Apnea Devices (D-SAD) are made out of medical grade nylon - a material of superior quality and outstanding intraoral haptics.
- Validated workflow for Primescan allows you to offer Panthera Dental's custom-made devices to treat Sleep Apnea.



1 Scanning

It does not matter if using Primescan or Omnicam. Take a full arch scan in less than one minute and a protrusive bite registration in our Connect SW.



2 Data transmission

Use the Connect Case Center to send the scan data to our recommended partner Panthera Dental or another partner of your choice. You can also transfer the data with the open STL format.



3 Digital Sleep Appliance treatment

Each device is individually designed for your patient based on your Primescan and Omnicam data. Thanks to the CAD/CAM technology of our recommended partner Panthera Dental, you will receive a custom-made device that fits perfectly, allowing your patients to enjoy considerable improvements in their quality of life.

Patient Monitoring

Visualize intraoral changes over time with OraCheck

Make the best of your intraoral scanner and visualize volumetric changes in the soft tissue, hard tissue and the position of the teeth over time. OraCheck provides a 3D comparison between two or more digital scans. The software superimposes the scans and visualizes differences in color. With OraCheck, an intraoral scan becomes a standard procedure in the dental office, because it supports the clinician's ability to see and monitor the individual patient situation.

Main features of the OraCheck software



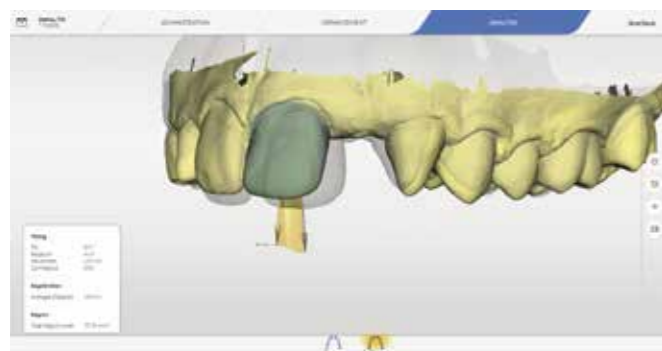
Volume measurement

Calculation of the volumetric change (increase/loss) in mm^3 .



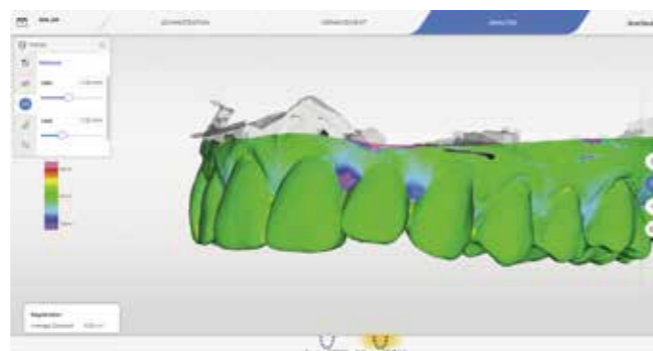
2D cross section

Presentation and measurement of distances in any cross-sections that can be interactively defined.



Tooth movements

Calculation and visualization of tooth movements.



Distance analysis

Visualize the distance between two scans.

dentsplysirona.com/oracheck

CEREC Upgrade

Not mandatory, but a great option

You have successfully integrated digital impressions in your office, and are looking to include digital chairside workflows into your treatments? No problem. You can expand Primescan or Omnicam into a CEREC system at any time and offer your patients high-quality dental restorations in a single visit. With CEREC, you can create restorations chairside in just five clicks.



1 Scanning

Spare your patients the discomfort of conventional impression. Take digital impressions with Primescan or Omnicam. They make scanning easier, more intuitive and ergonomic than ever before. The precise 3D models in natural colors will impress both you and your patients.



2 Design

The CEREC software creates outstanding design proposals, based on the unique Biojaw algorithm. It automatically provides you with a genuine tooth restoration, customized for the individual patient. Benefit from the simple, clearly structured and intuitive user interface.



3 Grinding or milling

CEREC Primemill and the CEREC software from Dentsply Sirona are completely synchronized. The grinding or milling process for your designed restorations is extremely precise and creates smooth surfaces and margins, as well as ultrafine structures. A large variety of materials is available, and even zirconium oxide can be produced and placed within a single visit.



4 Sintering and finishing

Full ceramic zirconium oxide restorations can be sintered and glazed in the CEREC SpeedFire furnace right in your practice. The induction technology of the furnace offers the shortest sintering and firing times, as well as highly intuitive and simple operation. All other ceramics can be processed in addition to zirconium oxide.

dentsplysirona.com/cerec

Grow your practice with Primescan

Primescan opens the door to all relevant digital workflows. Going digital in your everyday work means you expand possible treatment areas within your practice and ensure greater satisfaction for your patients while growing your business at the same time.



- More than **75%** of patients are likely to have more preventative treatments as well as more elective procedures if digital technology played a role in their visit.¹
- 80%** would feel more confident they are getting the best possible dental care if digital technology, such as a 3D intraoral scanner or 3D x-ray, were used in the practice.¹
- Study shows **84%** of patients preferred digital to conventional impression taking.²
- 86%** of Primescan clinicians agree that Primescan enables higher fitting accuracy.³
- 79%** of Connect SW 5.2 users indicate it's easy to connect with labs using the Connect software 5.2.⁴



"The acquisition of the new Primescan brought greater speed and accuracy both in the prosthetic work on teeth and implants and in the scanning of total arches for snoring devices and apnea, orthodontic aligners and guided surgeries. On top of this, it enables a fast and assertive communication with my lab, adding tremendous value to my daily work and providing even greater satisfaction and enchantment to my patients."

Dr. Luciana Sargologos | São Paulo, Brazil

¹ Patient Perceptions Quantitative Research, May 2020 - USA
² Haddadi Y, Bahrami G, Isidor F, Evaluation of Operating Time and Patient Perception Using Conventional Impression Taking and Intraoral Scanning for Crown Manufacture: A Split-mouth, Randomized Clinical Study. Int J Prosthodont 2018;31(31):55-59
³ Primescan Customer Satisfaction Survey, N=50 among U.S. Primescan & CEREC Primescan clinicians, April 2021
⁴ Based on a 2022 survey of 164 U.S. dentists. Data on file.

dentsplysirona.com/primescan

High-performance scanners and acquisition center from Dentsply Sirona

Choosing the right scanner depends on your individual needs and requirements. Regardless of whether you choose Primescan or Omnicam, you can be sure that Dentsply Sirona is the right choice for all your digital needs.

Primescan and Omnicam features at a glance

	Primescan	Omnicam
Scan procedure	Dynamic depth scan (up to 20 mm)	Triangulation
Powder-free	yes	yes
Scans reflective metal surfaces (gold, amalgam, etc.)	yes	with restrictions (if necessary, apply powder locally)
Scans in color	yes	yes
Photorealistic scans	yes	yes
Color analysis	yes (not available for disposable sleeve and for autoclave solution)	yes (not available with disposable sleeve)
Constantly self-heated to prevent fogging	yes, internally active	yes, passively in scanner cradle
Warm-up time	just a few minutes after starting the AC	approx. 15 min
Full arch scan* (upper, lower, bite registration, model calculation)	approx. 2-3 min	approx. 8-12 min
Wipe disinfection	yes	yes
Autoclavable**	yes	no
Dry heat sterilization	yes	yes
Disposable sleeves	yes	yes
High-level disinfection	yes	yes
Overall dimensions (W x H x L)	50.9 x 58.8 x 253 mm	40 x 50 x 223 mm
Weight	457 g (plastic sleeve) 524.5 g (metal sleeve)	316 g
Scanner head (W x H)	22.5 x 20.7 mm	16.1 x 16.2 mm
Mirror sleeve (L)	110 mm	107 mm

* Depending on experience and routine with the system.
 ** Only applicable for autoclave sleeve.

Dentsply Sirona

Sirona Dental Systems GmbH
Fabrikstraße 31, 64625 Bensheim, Germany
dentsplysirona.com

Procedural Solutions

Preventive
Restorative
Orthodontics
Endodontics
Implants
Prosthetics

Enabling Technologies

CAD/CAM
Imaging
Treatment Centers
Instruments