



Atlantis®

# When restorative versatility is prioritized

Atlantis® suprastructures for removable solutions

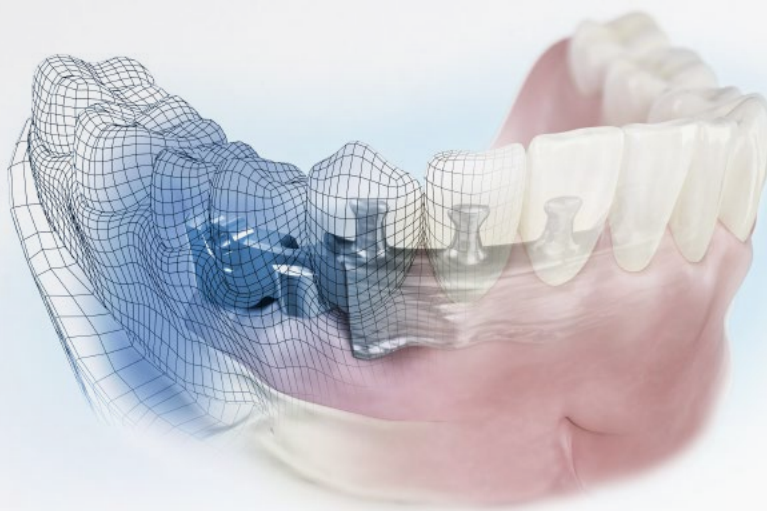


 **Dentsply  
Sirona**  
Implants

# Customized removable solutions – for your choice of implant system

To meet all needs of the treating clinician team, as well as patient requirements and preferences for function and esthetics, Atlantis removable suprastructures from Dentsply Sirona have been continuously developed. Today a wide range of bar profiles and attachments can be offered, compatible with all major implant systems.<sup>1</sup>

The suprastructures are milled from solid blocks of titanium or cobalt-chrome (Atlantis Bar), or from solid blocks of titanium (Atlantis 2in1). By using world-class manufacturing, supported by computer-based industrial and medical expertise, benefits that go beyond CAD/CAM are provided.



## Atlantis® Bar

– Customize your treatments by choosing from a wide range of bars and attachments preparations for removable dentures

Indicated for removable dentures. Bars can be designed following the gingival profile and with extensions.

Atlantis Bar can include a combination of various attachment options. Both standard and custom shaped bars are available, depending on case requirements.



## Atlantis® 2in1

– Combine screw-retained stability with removable prosthetic convenience

Provides primary and secondary suprastructures for a removable solution. The primary is fixed to implants, while the secondary attaches to the primary using metal-to-metal friction and additional retention elements. The secondary is a bridge or hybrid suprastructure that can be finished with custom teeth and denture resin. Atlantis 2in1 is only available in titanium.

## Improved design of custom bars

Except standard bars in different sizes and profiles, custom bars now are available in an anatomic design with 4 different taper angles.



## Upgraded products

The milling strategies for Atlantis suprastructures have been optimized to ensure a high strength and a perfect fit of the suprastructures. The precise and passive fit has been demonstrated in accordance with the Sheffield Test<sup>2</sup> from the University of Sheffield, UK.

## Time-saving workflow

The simplicity of the ordering process and delivery of the suprastructures, is leaving time for the dental technicians, and make the workflow in the dental laboratories more efficient.

## Wide flexibility

The removable suprastructures give you the freedom to work with your preferred implant system.



## We've got you covered

By choosing Atlantis, you can be assured that the prosthetic solutions you receive are of the highest quality, safety and reliability. This is why Atlantis patient-specific prosthetic solutions come with an exclusive and industry-leading comprehensive warranty program. If an implant supplier does not honor its warranty due to your use of Atlantis suprastructures, Dentsply Sirona will cover both the suprastructure and the implants.<sup>3</sup>

1. Refer to the Atlantis suprastructures implant compatibility chart.
2. White GE. The Sheffield fitting test. Osseointegrated Dental Technology 1993;61. Quintessence Publishing Co Ltd, London.
3. Subject to the terms and conditions of the Atlantis warranty.

All trademarks, company names and implant designs are the property of their respective owners.



## Atlantis® Bar and Atlantis® 2in1 for removable solutions



CAD design of the suprastructure in Atlantis Viewer, for approval prior to milling.



Primary structure of an Atlantis 2in1 is designed as a bar to be fixed to implants.



Secondary structure of an Atlantis 2in1 is designed to be attached to the primary using friction fit.



Secondary structure of an Atlantis 2in1 designed as a hybrid, finished with prefabricated teeth and denture resin.

*Courtesy of Dr Odont, Oral surgeon Johanna Berstad, Prosthodont Lisa Printzell and MDT Svein Thorstensen, Oslo, Norway*



## About Dentsply Sirona Implants

Dentsply Sirona Implants offers comprehensive solutions for all phases of implant therapy, including Ankylos®, Astra Tech Implant System® and Xive® implant lines, digital technologies, such as Atlantis® patient-specific solutions and Simplant® guided surgery, Symbios® regenerative solutions, and professional and business development programs, such as STEPPS™. Dentsply Sirona Implants creates value for dental professionals and allows for predictable and lasting implant treatment outcomes, resulting in enhanced quality of life for patients.

## About Dentsply Sirona

Dentsply Sirona is the world's largest manufacturer of professional dental products and technologies, with a 130-year history of innovation and service to the dental industry and patients worldwide. Dentsply Sirona develops, manufactures, and markets a comprehensive solutions offering including dental and oral health products as well as other consumable medical devices under a strong portfolio of world class brands. As The Dental Solutions Company™, Dentsply Sirona's products provide innovative, high-quality and effective solutions to advance patient care and deliver better, safer and faster dentistry. Dentsply Sirona's global headquarters is located in York, Pennsylvania, and the international headquarters is based in Salzburg, Austria. The company's shares are listed in the United States on NASDAQ under the symbol XRAY.

Visit [www.dentsplysirona.com](http://www.dentsplysirona.com) for more information about Dentsply Sirona and its products.

THE DENTAL  
SOLUTIONS  
COMPANY™

