



ProTaper Gold[®]

The name you know and trust



STERILE

Trusted performance and predictable shapes

Our high-quality instruments are individually packaged and sterile to minimize infection risk. Ideal for maximum cutting efficiency and reduced risk of cross contamination.

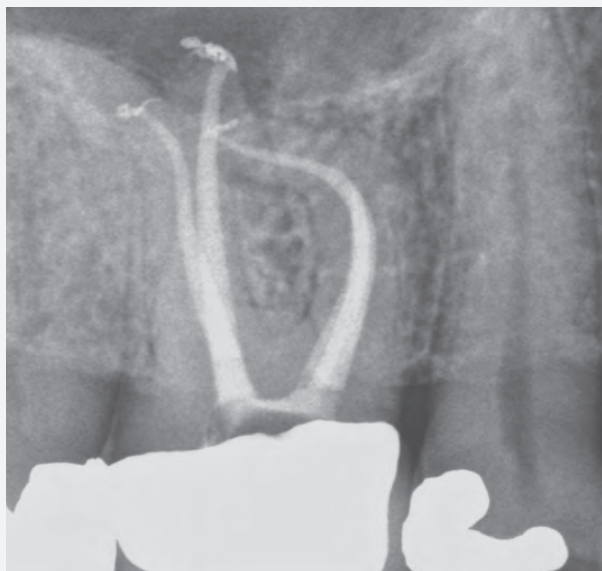
The ProTaper Gold® technology includes a series of “Shaping” and “Finishing” files that create the predictable ProTaper® shapes, and a system proven and trusted by clinicians throughout the world.

“We all know that shaping significant canal curvatures can be scary. Gold has given me a new level of confidence and control that turns this fear into fun.”

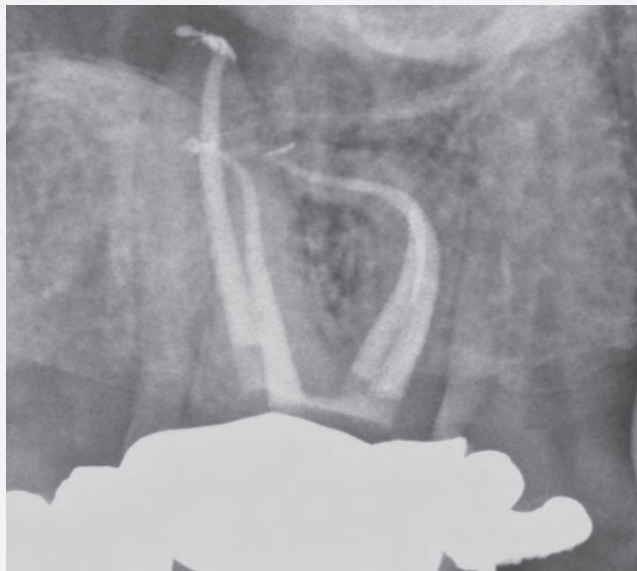
Dr. Jordan C. West, DDS, MSD



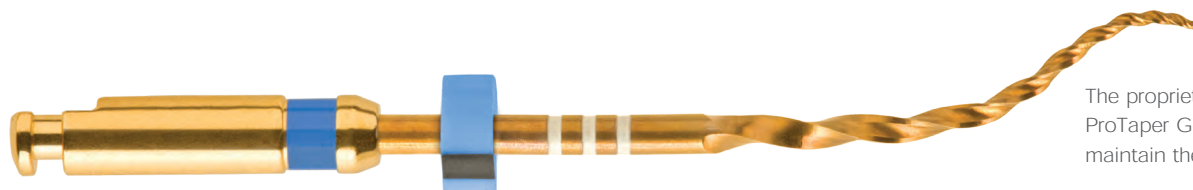
Pre Op View



Post Op Perpendicular View



Post Op Distal Oblique View



The proprietary processing of ProTaper Gold® allows it to maintain the canal curvature.¹

¹ Gagliardi J, Versiani MA, de Sousa-Neto MD, Plazas-Garzon A, Basrani B. Evaluation of the Shaping Characteristics of ProTaper Gold®, ProTaper Next®, and ProTaper® Universal in Curved Canals. J Endod. 2015 Oct;41(10):1718-24.

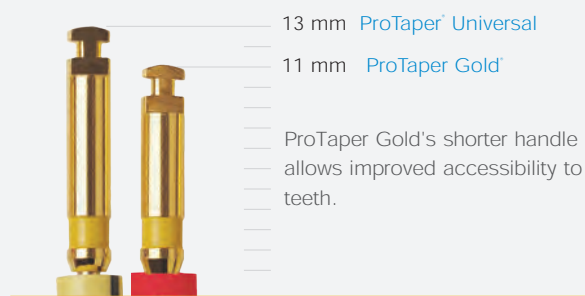
Greater flexibility start – to – finish

The visibly advanced metallurgy of ProTaper Gold® creates a difference you can see – and feel. That's because ProTaper Gold® rotary files feature the same exact geometries as ProTaper® Universal, but offer an increase in flexibility. This is especially important in the finishing files, when navigating challenging curves in the apical region.

ProTaper Gold® shaping files pre-enlarge canals and are designed to be used with the same familiar outstroke brushing technique.



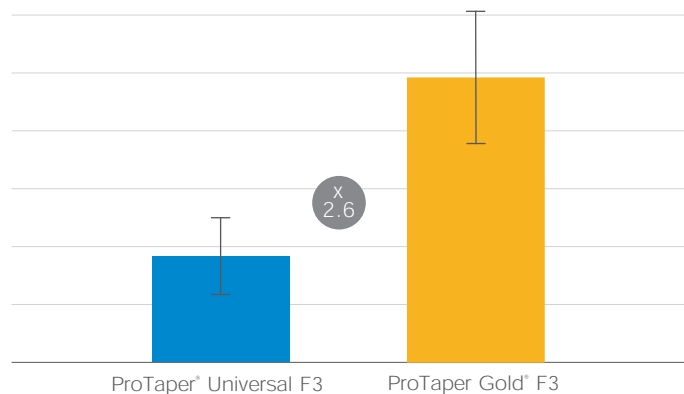
ProTaper Gold® finishing files are more flexible so you can shape and finish each canal with a complete system approach.



*variable taper

Greater resistance to cyclic fatigue

ProTaper Gold® provides more than twice the resistance to cyclic fatigue as ProTaper® Universal.* And that's an important advantage, because cyclic fatigue is the leading cause of file separation.²

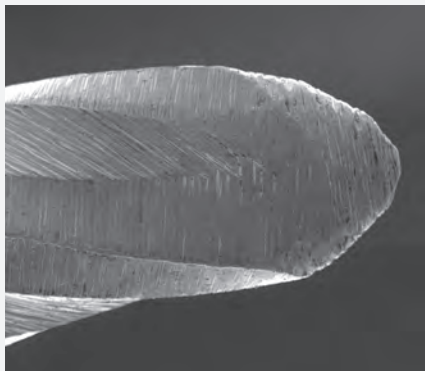


² Shen Y, Cheung GS, Bian Z, Peng B. Comparison of defects in ProFile and ProTaper® systems after clinical use. J Endod. 2006 Jan;32(1):61-5.
* Average value for ProTaper Gold® compared to ProTaper® Universal. Based on internal testing. Data on file.

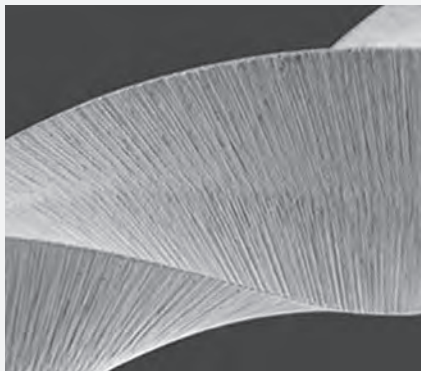
Familiar efficiency

The majority of clinicians* prefer ProTaper Gold® over ProTaper® Universal rotary files because they create the same smoothly tapered shapes as ProTaper® Universal³ while delivering significant new advantages.

You get enhanced flexibility and resistance to cyclic fatigue, with the familiarity of a complete file system you know and trust.



The non-cutting tip design allows each instrument to safely follow the secured portion of the canal while the small flat area on the tip enhances its ability to find its way through soft tissue and debris.⁴



The convex triangular cross-section and progressive taper enhance cutting action while decreasing rotational friction between the blade of the file and dentin.⁵

ProTaper Gold® features a patented, progressively tapered design that has been trusted by dentists for more than ten years.



The variable taper of ProTaper Gold® Conform Fit® gutta-percha predictably fits canals shaped with ProTaper Gold® and delivers warm gutta-percha up to 4 mm beyond the heat source. Corresponding paper points and obturators for ProTaper Gold® are available.



ProTaper Gold® uses the same rotary action and works with the same motor settings as ProTaper® Universal.



3 West J. Endodontic Update 2006. J Esthet Restor Dent. 2006; 18(5): 280-300. Review.

4 Blum JY, Machtou P, Ruddle C, Micallef JP. Analysis of mechanical preparations in extracted teeth using ProTaper® rotary instruments: value of the safety quotient. J Endod. 2003 Sep;29(9):567-75.

5 Berutti E, Negro AR, Lendini M, Pasqualini D. Influence of manual preflaring and torque on the failure rate of ProTaper® rotary instruments. J Endod. 2004 Apr;30(4):228-30.

* Internal testing. Data on file.

ProTaper Gold®

The geometries of ProTaper® with advanced metallurgy

THEN

ProTaper® Universal sets a new standard in efficiency.

NOW

The ProTaper® legacy continues with ProTaper Gold®:

- +24% increased flexibility^{**}
- x 2.6 greater resistance to cyclic fatigue^{***}
- Shorter 11mm handle
- Packaged pre-sterilized and fit for single-use

ProTaper Gold® features the same simplicity and smoothly tapered shapes you know and trust from ProTaper® Universal. Developed with proprietary advanced metallurgy, ProTaper Gold® rotary files offer greater flexibility for ProTaper® performance that's better than ever.

** Average value for ProTaper Gold® compared to ProTaper® Universal. Based on internal testing. Data on file.

*** For ProTaper Gold® F3 finishing file. Average cyclic fatigue resistance of the ProTaper Gold® system is x 2.4 superior to the ProTaper® Universal system. Based on internal testing. Data on file.

Product references



ProTaper Gold® Files



STERILE SX
PTGRSX19 19MM



STERILE S1
PTGRS121 21MM
PTGRS125 25MM
PTGRS131 31MM



STERILE S2
PTGRS221 21MM
PTGRS225 25MM
PTGRS231 31MM



STERILE F1
PTGRF121 21MM
PTGRF125 25MM
PTGRF131 31MM



STERILE F2
PTGRF221 21MM
PTGRF225 25MM
PTGRF231 31MM



STERILE F3
PTGRF321 21MM
PTGRF325 25MM
PTGRF331 31MM



STERILE F4
PTGRF321 21MM
PTGRF325 25MM
PTGRF331 31MM



STERILE F5
PTGRF521 21MM
PTGRF525 25MM
PTGRF531 31MM

Assortment file packs
PTGRA21 21MM SX/F3
PTGRA25 25MM SX/F3
PTGRA31 31MM SX/F3



ProTaper Gold® Paper points



Box of 180x **sterile** paper points
PTGAPF1 F1
PTGAPF2 F2
PTGAPF3 F3
PTGAPF4 F4
PTGAPF5 F5
PTGAPAST Assorted Box of 180



ProTaper Gold® Conform Fit® Gutta – Percha

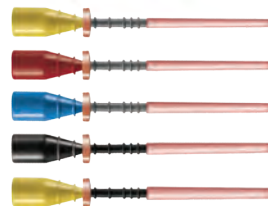


Box of 60x variable tapered Gutta – Percha points

PTGGPF1 F1
PTGGPF2 F2
PTGGPF3 F3



ProTaper Gold® Obturators



Blister of 6x obturators

PTGOB6F1 F1
PTGOB6F2 F2
PTGOB6F3 F3
PTGOB6F4 F4
PTGOB6F5 F5

Box of 30x obturators (5 blisters)

PTGOB30F1 F1
PTGOB30F2 F2
PTGOB30F3 F3
PTGOB30F4 F4
PTGOB30F5 F5



SINGLE USE ONLY

Above products designed for single use.

+ STERILE

ProTaper Gold® Files come pre-sterile and ready for use.



DENTSPLY Tulsa Dental Specialties
DENTSPLY International, Inc.
608 Rolling Hills Drive
Johnson City, TN 37604, USA
Phone: 1-800-662-1202
dentsplysirona.com

