

# Primescan

## Reference Denture scan strategy



### Case set up

#### Start on the Primescan Administration phase

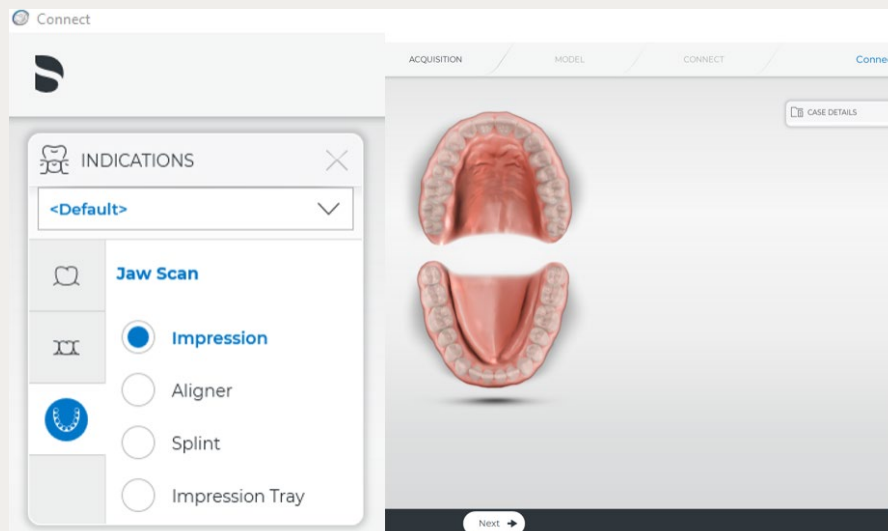
Go to: Indications

Select: Jaw Scan

Select: Impression

Select: Next

Go to: Acquisition phase



### Scan strategy

The Primescan Reference Denture scan strategy occurs extra orally. Proceed by scanning only the buccal surfaces, borders, occlusal plane and intaglio of the washed denture. On the maxillary denture it is not necessary to scan the palatal surface.

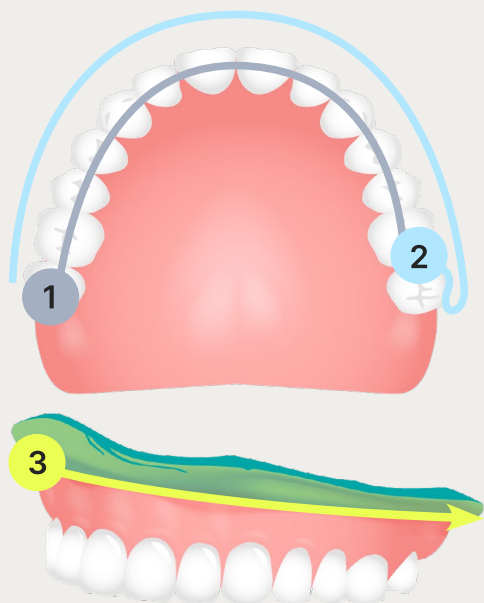
To make the buccal bite scan, hold the dentures together with the bite registration\* and scan the buccal bite both left and right sides to capture the occlusal alignment.

It is important to have overlapping data so the sweeps can be stitched. Please use the following pattern when scanning Reference Dentures cases.

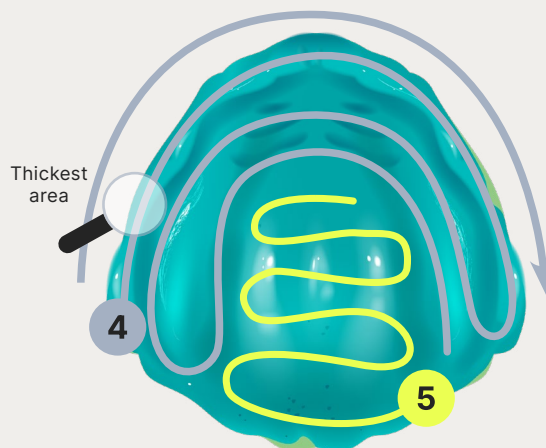


\* Alternatively, the bite registration can be done intraorally.

### Upper Jaw



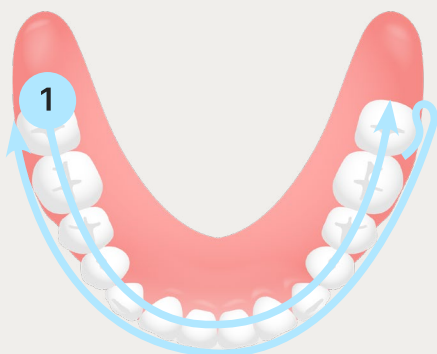
### Upper Jaw intaglio



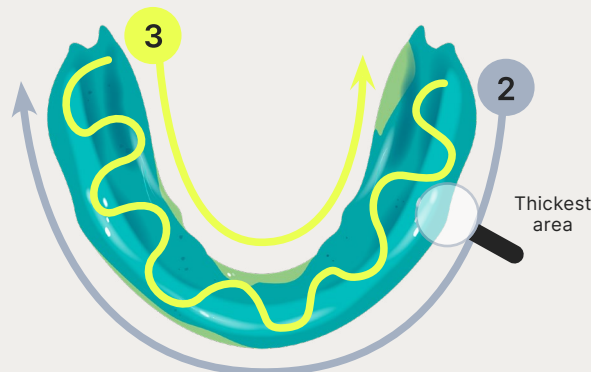
- 1 Start scanning on the occlusal buccal surface of a molar and guide the scanner around the entire arch.
- 2 Tilt the scanner approx. 60° in a buccal direction and guide it around the entire arch.
- 3 Continue the scan along the buccal borders and circle back around the full arch to capture all border areas.

- 4 Identify the thickest area of the buccal border. Begin to capture the intaglio by rolling over the thickest area into the intaglio surface and scan along the intaglio ridge with long swipes.
- 5 Extend the scan to the entire intaglio surface by acquiring it with zig-zag swipes.

### Lower Jaw



### Lower Jaw intaglio



- 1 Start scanning on the occlusal buccal surface of a molar and guide the scanner around the entire arch.  
Tilt the scanner approx. 60° in a buccal direction and guide the scanner around the entire arch.  
Extend the scan to the buccal borders and circle back across the full arch to capture all border areas.

- 2 Identify the thickest area of the buccal border. Begin to capture the intaglio by rolling over the thickest area into the intaglio surface and scan along the intaglio ridge area with a long swipe.
- 3 Extend the scan to the entire intaglio surface and borders by acquiring the intaglio surface with zig-zag swipes.