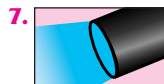
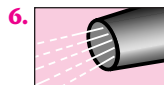
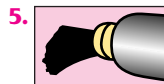
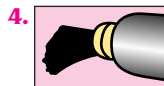


Composite, Ceramic and Amalgam Repairs



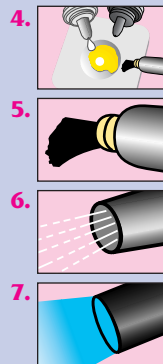
1. Roughen the fractured surface as much as possible with a diamond bur. Rinse and air dry.
2. Etch the tooth surfaces to be repaired with Caulk[®] 34% Tooth Conditioner Gel for 15 seconds. Etch porcelain restoration with hydrofluoric acid.
3. Rinse for 10 seconds. Gently air dry.
4. Apply Caulk Silane Coupling Agent to porcelain surfaces to be repaired following directions for use.
5. Immediately apply **generous** amounts of Prime & Bond NT adhesive to thoroughly wet repair surfaces. These surfaces should remain wet for 20 seconds, which may necessitate applying additional adhesive.
6. Gently air dry for 5 seconds. Surface should have a **uniform glossy appearance**. If not, repeat steps 5 and 6.
7. Light cure Prime & Bond NT adhesive for 10 seconds.
8. Complete repair with placement and curing of proper shade of TPH[®] Spectrum[™] composite.



Indirect Restorations: Inlays, Onlays, Crowns and Bridges



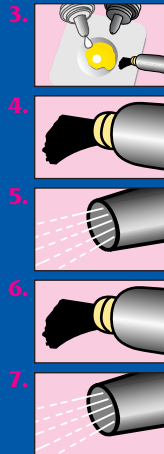
1. Etch tooth with Caulk[®] 34% Tooth Conditioner Gel: enamel for 15 seconds minimum, dentin for 15 seconds maximum.
2. Do not acid etch preps for full coverage crowns.
3. Rinse for 10 seconds. Blot dry, but do not rub, to remove excess moisture. Dentin should be blotted until there is no pooling of water and surface is left moist and glistening.
4. Mix an equal number of drops of Prime & Bond NT adhesive and Self Cure Activator in a clean mixing well for 2 seconds.
5. Immediately apply **generous** amounts of mixed adhesive/activator to thoroughly wet the tooth surfaces. These surfaces should remain wet for 20 seconds, which may necessitate applying additional mixed adhesive/activator.
6. Gently air dry for 5 seconds. Surface should have a **uniform glossy appearance**. If not, repeat steps 5 and 6.
7. Light cure mixed adhesive/activator for 10 seconds.
8. Mix and apply a resin cement according to directions for use. Seat restoration.



Endodontic Post Cementation



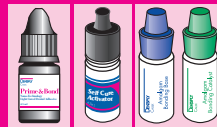
1. Etch post space and coronal bonding surfaces with Caulk[®] 34% Tooth Conditioner Gel for 15 seconds.
2. Rinse for 15 seconds. Dry with a gentle air blast and paper points to remove residual moisture but do not desiccate conditioned dentin surface.
3. Mix an equal number of drops of Prime & Bond NT adhesive and Self Cure Activator in a clean mixing well for 2 seconds.
4. Immediately apply **generous** amounts of mixed adhesive/activator to post preparation. A paper point pre-wetted with the adhesive mixture may assist in wetting the deepest portion of the preparation. Maintain contact of adhesive/activator with tooth structure for 20 seconds.
5. Dry post prep with air and/or clean, dry paper points for 5 seconds.
6. Apply mixed adhesive/activator to the post.
7. Air dry post for 5 seconds. If non-shiny areas appear on the treated post, reapply a second coat of mixed adhesive/activator.
8. Mix a resin cement according to directions for use. Apply to post and post space. Seat post.
9. Stabilize post. Clean up excess cement and light cure the coronal portion of cemented post for 20 seconds.
10. Proceed with core build-up and/or preparation.



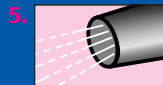
Prime & Bond[®] NT[™] Dual Cure

Nano-Technology Dental Adhesive

Adhesive Bonding of Direct Amalgam Restorations



1. Etch cavity surfaces with Caulk[®] 34% Tooth Conditioner Gel: enamel for 15 seconds minimum, dentin for 15 seconds maximum.
2. Rinse for 10 seconds. Blot dry with a moist cotton pellet to remove excess moisture. Dentin should be blotted until there is no pooling of water and surface is left moist and glistening.
3. Mix an equal number of drops of Prime & Bond NT adhesive and Self Cure Activator in a clean mixing well for 2 seconds.
4. Immediately apply **generous** amounts of mixed adhesive/activator to thoroughly wet the tooth surfaces. These surfaces should remain wet for 20 seconds, which may necessitate applying additional mixed adhesive/activator.
5. Gently air dry for 5 seconds. Surface should have a **uniform glossy appearance**. If not, repeat steps 4 and 5.
6. Mix equal drops of Amalgam Bonding Base and Amalgam Bonding Catalyst for 2 seconds.
7. Apply mixed Amalgam Bonding Base and Catalyst over entire preparation.
8. Immediately place and condense Dispersalloy[®] amalgam.



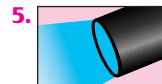
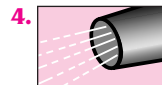
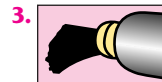
Prime & Bond[®] NT[™] Dual Cure

Nano-Technology Dental Adhesive

Direct Composite/ Compomer Restorations



1. Etch with Caulk[®] 34% Tooth Conditioner Gel: enamel for 15 seconds minimum, dentin for 15 seconds maximum.
For compomer restorations in non-stress bearing situations, acid etching is not necessary.
2. Rinse for 10 seconds. Blot dry, but do not rub, to remove excess moisture. Dentin should be blotted until there is no pooling of water and surface is left moist and glistening.
3. Immediately apply **generous** amounts of Prime & Bond NT adhesive to thoroughly wet the tooth surfaces. These surfaces should remain wet for 20 seconds, which may necessitate applying additional adhesive.
4. Gently air dry for 5 seconds. Surface should have a **uniform glossy appearance**. If not, repeat steps 3 and 4.
5. Light cure Prime & Bond NT adhesive for 10 seconds.
6. Place TPH[®] Spectrum[™] composite, SureFil[™] high density restorative or Dyract[®] AP compomer.



Prime & Bond[®] NT[™] Dual Cure

Nano-Technology Dental Adhesive

Veneer Cementation



1. Etch with Caulk[®] 34% Tooth Conditioner Gel: enamel for 15 seconds minimum, dentin for 15 seconds maximum.
2. Rinse for 10 seconds. Blot dry, but do not rub, to remove excess moisture. Dentin should be blotted until there is no pooling of water and surface is left moist and glistening.
3. Immediately apply **generous** amounts of Prime & Bond NT adhesive to thoroughly wet the tooth surfaces. These surfaces should remain wet for 20 seconds, which may necessitate applying additional adhesive.
4. Gently air dry for 5 seconds. Surface should have a **uniform glossy appearance**. If not, repeat steps 3 and 4.
5. Light cure Prime & Bond NT adhesive for 10 seconds.
6. Treat bonding surface of the restoration according to manufacturer or dental laboratory instructions, i.e., etching or mechanical roughening. Apply Caulk Silane Coupling Agent to ceramic or porcelain restorations.
7. Mix and apply a resin cement according to directions for use.

