

EFFECTIVE ROOT CANAL THERAPY STARTS HERE.

Virtually every root canal therapy appears successful immediately after obturation. So why – after months, or even years – do some cases fail? **The problem is bacteria. The solution is BioPure® MTAD® Cleanser.**

MEDICAL SCIENCE'S ANSWER. DEVELOPED BY EXPERTS.

BioPure MTAD Antibacterial Root Canal Cleanser is designed to chemically clean and disinfect the root canal system following endodontic instrumentation. Its unique, patent-pending combination of components was developed in conjunction with some of the world's leading endodontic researchers.

BIOPURE MTAD CLEANSER IS A MIXTURE OF:

<i>Tetracycline isomer</i>	<i>disinfects the root dentin</i>
<i>Acid</i>	<i>removes inorganic materials</i>
<i>Detergent</i>	<i>is a wetting agent and reduces surface tension of the product</i>



BioPure MTAD Cleanser is easily dispensed with an included syringe and 28-gauge, side-vented ProRinse® needle that reaches well into the canal space and passively delivers the solution.

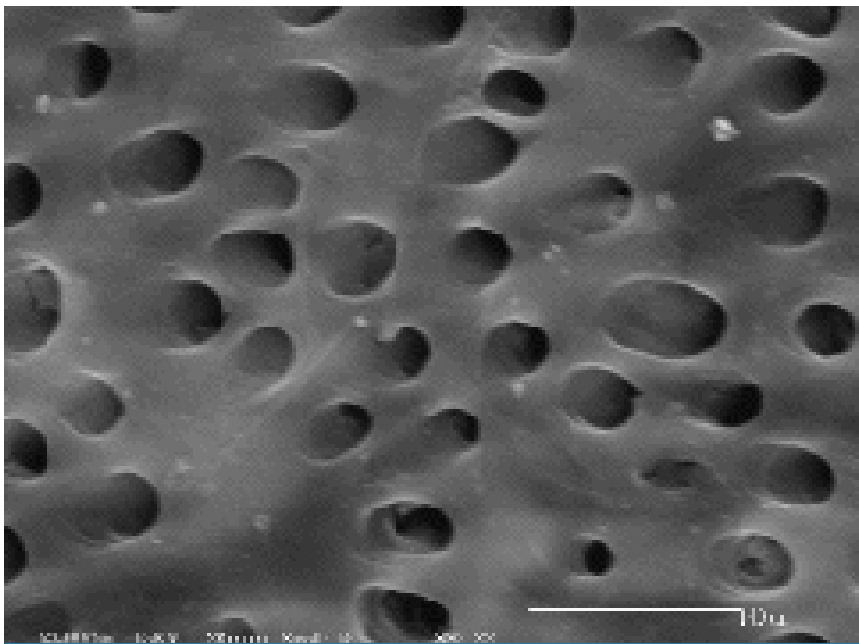
BioPure®
MTAD®
Antibacterial Root Canal Cleanser

BIOPURE MTAD ANTIBACTERIAL ROOT CANAL CLEANSER EFFECTIVELY REMOVES THE SMEAR LAYER AND ERODES LESS DENTINAL STRUCTURE THAN EDTA.

Root canal system morphology is complex with numerous intricacies, lateral canals and dentinal tubules in which bacteria hide – at varying depths. The smear layer only increases the challenge of eliminating bacteria by inhibiting or delaying the penetration of antibacterial irrigants into the dentinal tubules.

Research shows distilled water and NaOCl leave the smear layer intact. 17% EDTA removes the smear layer – but at the expense of erosion to the dentinal tubules in the process.

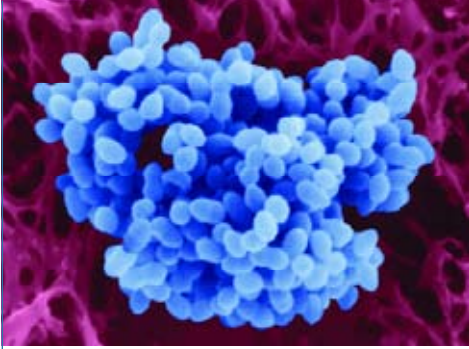
BioPure MTAD Cleanser is different. When used as directed, it is proven to effectively remove the smear layer with less erosion to dental structure than EDTA. Research shows when BioPure MTAD Cleanser is used as recommended, it produces no adverse effects on flexural strength and modulus of elasticity of dentin.¹



This root canal is clean with dentinal tubules intact after treatment with 1.5% NaOCl as the initial root canal irrigant and BioPure MTAD Root Canal Cleanser as the final irrigant.

Image courtesy of the University of North Carolina.

Innovative



Dubbed the "super bug" of endodontics, *E. faecalis* is a bacterium known to resist the antibacterial effects of certain root canal medicaments including NaOCl.

Image copyright Dennis Kunkel Microscopy, Inc.

PROVEN EFFECTIVE AGAINST *E. FAECALIS*.

BioPure MTAD Cleanser is proven to kill the resistant bacterial strain *E. faecalis*. Its effectiveness against this troublesome bacterium common in root canal systems is noteworthy:

- *BioPure MTAD Cleanser kills E. faecalis after a relatively short exposure time of two to five minutes.*²

BIOPURE MTAD CLEANSER IS MORE BIOCOMPATIBLE THAN NaOCl.

Sodium Hypochlorite (NaOCl) dissolves organic tissue. Higher concentrations are more aggressive than diluted concentrations. BioPure MTAD Cleanser, on the other hand, is a biocompatible material.³ Its ability to completely remove the smear layer is enhanced when NaOCl is used as an intracanal irrigant during instrumentation.

Research shows only a very low concentration of NaOCl (1.3%) is necessary to achieve effective results. Consequently, BioPure MTAD Cleanser is an ideal solution for clinicians who prefer to use diluted NaOCl (1.3%), rather than use it at the 5.25% concentration.

BIOPURE MTAD ANTIBACTERIAL ROOT CANAL CLEANSER IMPROVES THE PENETRATION OF MEDICAMENTS AND SEALERS BECAUSE IT EFFECTIVELY REMOVES THE SMEAR LAYER.

BioPure MTAD Cleanser facilitates penetration of medicaments and sealers by removing the smear layer, and its detergent ingredient aids its diffusion into root canal irregularities and dentinal tubules.³

In addition, research shows BioPure MTAD Cleanser produces a bonding surface that is comparable to a standard acid etching – and that teeth endodontically treated with BioPure MTAD Cleanser may not need any additional dentin conditioning before the application of the dental adhesive.³

EFFECTIVE CLEANSING FROM ORIFICE TO APEX.

BioPure MTAD Cleanser's comprehensive abilities are setting the new standard for root canal cleansing.

FINAL IRRIGANT	KILLS RESISTANT BACTERIA (E. FAECALIS)	REMOVES SMEAR LAYER	DOES NOT SIGNIFICANTLY CHANGE DENTIN	IMPROVES PENETRATION OF MEDICAMENTS & SEALERS	BIOCOMPATIBILITY	FACILITATES EFFECTIVE ONE-VISIT ENDO
BioPure MTAD Cleanser	✓	✓	✓	✓	✓	✓
EDTA		✓		✓		✓
NaOCl						✓
Calcium Hydroxide						
Distilled Water			✓		✓	
Saline			✓		✓	

EXPLORE THE POSSIBILITIES.

Find out more about putting the significant advantages of BioPure MTAD Antibacterial Root Canal Cleanser to work in your practice.

Call Tulsa Dental Specialties at 1-800-662-1202 or visit tulsadentalspecialties.com.

DENTSPLY
TULSA DENTAL
SPECIALTIES
 Endodontics & Implants
Our Quality. Your Success.
Their Satisfaction.

DENTSPLY Tulsa Dental Specialties
 DENTSPLY International, Inc.
 5100 E. Skelly Drive, Suite 300
 Tulsa, OK 74135
 1-800-662-1202
 1-800-597-2779 (fax)
www.tulsadentalspecialties.com



See Directions For Use

For Dental Use Only

Rx only

PROVEN

(1) *Journal of Endodontics*, Vol. 29, No. 11, (2003), p.750 (2) *Journal of Endodontics*, Vol. 29, No. 6, (2003), pp.401-402. (3) *Journal of Endodontics*, Vol. 29, No. 12, (2003), pp. 819-821.

© DENTSPLY International, Inc., 608 Rolling Hills Drive, Johnson City, TN 37604. Patents pending. U.S. federal law restricts this device to sale by or on the order of a dentist.

SSBPMTADPF 2/09D