

## Cavitron® Ultrasonic Insert

# Automated Reprocessing Steps: Instrument Washer/Disinfector

This reference, provided by Dentsply Sirona, is meant as a guide and is not intended as a replacement for following the Instructions for Use or IFU for any products shown. Refer to the Cavitron® ultrasonic inserts IFU for complete insert reprocessing procedures.

Utilizing automated equipment, like an instrument washer/disinfector will increase the efficiency of the cleaning process for your Cavitron® ultrasonic inserts and reduce risks of handling contaminated instruments. **Before getting started**, it's important to not only follow the Cavitron® inserts IFU, but also the manufacturer's IFU for the instrument washer and the instrument cleaning solution being used.

When placing Cavitron® inserts into an instrument washer, best practice would be to use an instrument cassette to reduce your risk of exposure and potential damage to the inserts.

**IMPORTANT:** Ensure the solution used in the instrument washer/disinfector is pH neutral or becomes pH neutral during operation of the unit.



1



### IF USING CASSETTES:

Place them into the Instrument washer/disinfector.

2



### IF CASSETTES ARE NOT USED:

Place the Cavitron® inserts into the basket of the instrument washer/disinfector and close the lid.

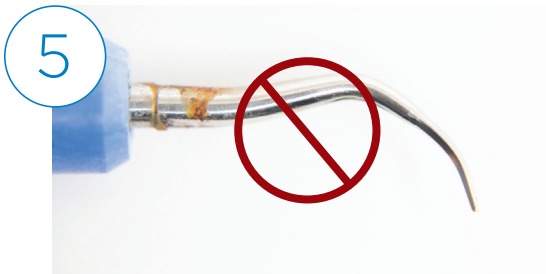
3



Once the Cavitron® inserts are loaded into the instrument washer/disinfector, begin the cycle. Most instrument washer/disinfectors have a cleaning and drying cycle, **ensure both cycles are followed**.



After the dry cycle ends, remove the inserts from the unit to prepare for packaging.

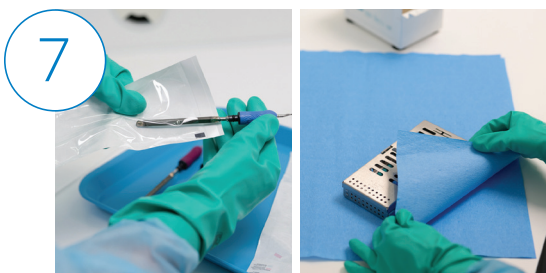


Ensure that the Cavitron® inserts are **completely dry** prior to packaging and sterilization.

**⚠** If Cavitron inserts are packaged and placed in a sterilizer before they are completely dry, staining, corrosion or even clogging of the insert may occur.



If debris is still visible, repeat the cleaning and dry cycle before packaging.



Place the inserts into an appropriately sized paper/plastic sterilization pouch or utilize a sterilization wrap for the cassettes.



Your Cavitron® ultrasonic inserts are now ready for sterilization! Make sure to read and follow Dentsply Sirona's IFU for the appropriate sterilizers, time, and temperatures that can be used with your inserts (see chart 1).

Always follow the manufacturer's IFU for the sterilizer being used. Follow the sterilizer's recommendation for proper placement of the sterilization pouches: paper side up or paper side down.

#### CHART 1

##### Steam Sterilization Cycles

\*Dynamic Air Removal  
Gravity Displacement

##### Sterilizing Temperature

270 °F / 132 ° C  
270 °F / 132 ° C

##### Sterilizing Cycle Time

3 Minutes  
10 Minutes

\* The steam sterilization parameters specified are for Dynamic Air Removal steam sterilizers (pre-vacuum and steam flush pressure pulse).



9 Allow the dry cycle to finish before removing the Cavatron® inserts from the sterilizer.



10 If the insert packaging is still wet, when removing them from the sterilizer, allow it to dry completely before storing.



11 Cavatron® inserts should remain bagged or wrapped until ready for use and stored in a dry closed or covered cabinet.



12 If a sterile package becomes compromised, repeat the process to clean, dry, package, and sterilize the inserts again.